

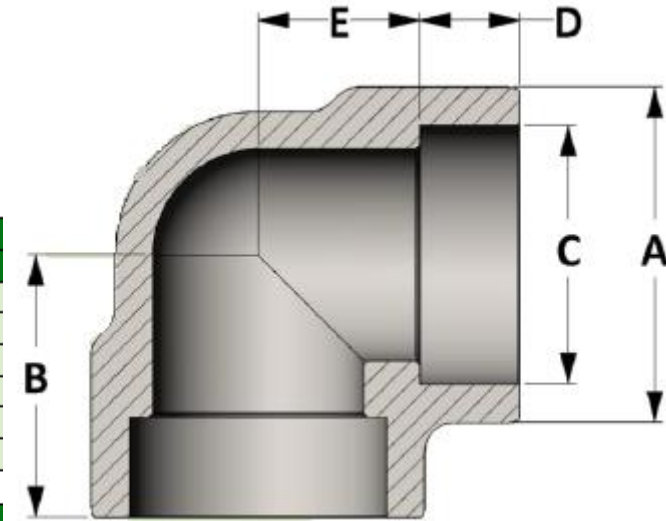


# Tablas de Accesorios Forjados





# Socket Weld 90° elbow



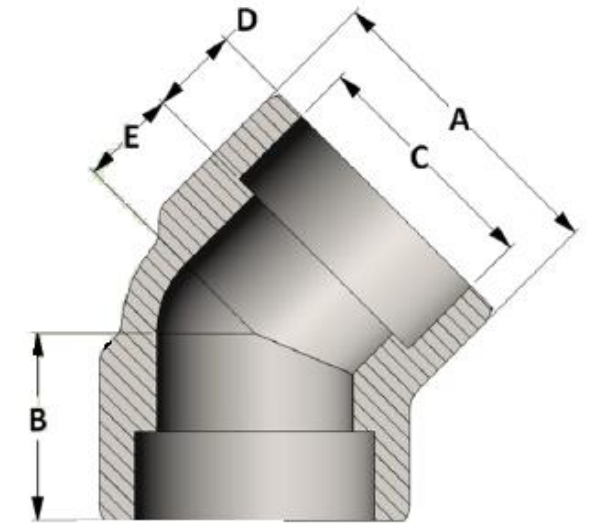
CLASS 3000 – Figure No. 13001												
PIPE SIZE	1/8	1/4	3/8	1/2	3/4	1	1-1/4	1-1/2	2	2-1/2	3	4
A	0.875	0.875	1.063	1.313	1.500	1.813	2.188	2.500	3.000	3.625	4.313	5.875
B	0.875	0.875	0.969	1.125	1.313	1.500	1.750	2.000	2.375	3.000	3.375	4.188
C	0.426	0.560	0.693	0.859	1.071	1.335	1.682	1.922	2.410	2.910	3.536	4.545
D	0.438	0.438	0.438	0.500	0.563	0.625	0.688	0.750	0.875	1.375	1.125	1.566
E	0.438	0.438	0.531	0.625	0.750	0.875	1.063	1.250	1.500	1.625	2.250	2.625
LBS	0.20	0.17	0.24	0.48	0.68	1.06	1.72	2.33	3.88	7.34	11.61	22.47

CLASS 6000 – Figure No. 16001												
PIPE SIZE	1/8	1/4	3/8	1/2	3/4	1	1-1/4	1-1/2	2	2-1/2	3	4
A	0.875	1.063	1.313	1.500	1.813	2.188	2.500	3.000	3.313	4.000	4.750	5.875
B	0.875	0.969	1.125	1.313	1.500	1.750	2.000	2.375	2.500	3.250	3.750	4.188
C	0.426	0.560	0.693	0.859	1.071	1.335	1.682	1.922	2.410	2.910	3.536	4.545
D	0.438	0.438	0.500	0.563	0.625	0.688	0.750	0.875	0.875	1.000	1.250	1.563
E	0.438	0.531	0.625	0.750	0.875	1.063	1.250	1.500	1.625	2.250	2.500	2.625
LBS	0.37	0.32	0.60	0.92	1.52	2.42	3.18	6.23	7.27	12.06	21.16	27.21

CLASS 9000 – Figure No. 19001												
PIPE SIZE	1/8	1/4	3/8	1/2	3/4	1	1-1/4	1-1/2	2	2-1/2	3	4
A	1.063	1.313	1.500	1.813	2.188	2.500	3.000	3.313	3.625	4.313	5.875	---
B	0.969	1.125	1.313	1.500	1.750	2.000	2.375	2.500	3.000	3.375	4.188	---
C	0.426	0.560	0.693	0.859	1.071	1.335	1.682	1.922	2.410	2.910	3.536	---
D	0.438	0.500	0.500	0.500	0.625	0.750	1.000	1.000	0.875	1.000	1.313	---
E	0.531	0.625	0.813	1.000	1.125	1.250	1.375	1.500	2.125	2.375	2.875	---
LBS	0.41	0.70	1.12	1.73	2.91	4.15	6.79	8.96	12.39	19.78	42.20	---

Clase de presión soldadura	Espesor de tubo
Class 3000	S80 /XH
Class 6000	S160
Class 9000	XXH

# Socket Weld 45° elbow



CLASS 3000 – Figure No. 13003

PIPE SIZE	1/8	1/4	3/8	1/2	3/4	1	1-1/4	1-1/2	2	2-1/2	3	4
A	1.063	1.063	1.063	1.313	1.500	1.813	2.188	2.500	3.000	4.000	4.750	5.875
B	0.750	0.750	0.750	0.875	1.000	1.125	1.313	1.375	1.688	2.063	2.500	3.125
C	0.426	0.560	0.693	0.859	1.071	1.335	1.682	1.922	2.410	2.910	3.536	4.545
D	0.438	0.438	0.438	0.438	0.500	0.563	0.625	0.563	0.688	0.938	1.250	1.500
E	0.313	0.313	0.313	0.438	0.500	0.563	0.688	0.813	1.000	1.125	1.250	1.625
LBS	0.26	0.24	0.18	0.40	0.55	0.89	1.23	1.76	3.02	7.62	12.49	19.34

CLASS 6000 – Figure No. 16003

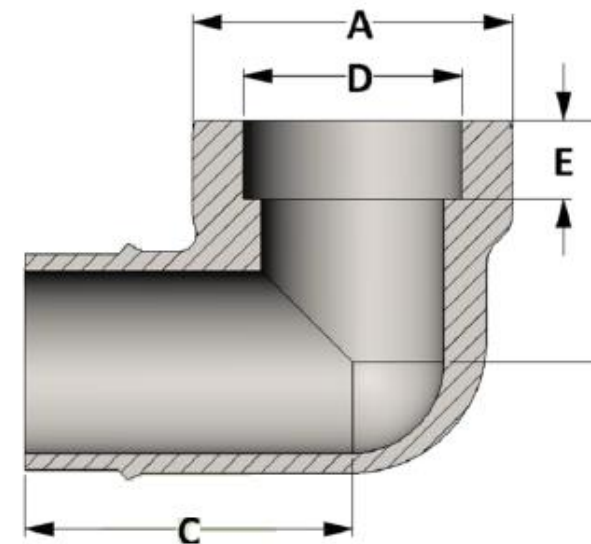
PIPE SIZE	1/8	1/4	3/8	1/2	3/4	1	1-1/4	1-1/2	2	2-1/2	3	4
A	1.063	1.063	1.313	1.500	1.813	2.188	2.500	3.000	3.313	4.000	4.750	5.875
B	0.750	0.750	0.875	1.000	1.125	1.313	1.375	1.688	1.781	2.063	2.500	3.125
C	0.426	0.560	0.693	0.859	1.071	1.335	1.682	1.922	2.410	2.910	3.536	4.545
D	0.438	0.438	0.438	0.500	0.563	0.625	0.563	0.688	0.656	0.813	1.125	1.500
E	0.313	0.313	0.438	0.500	0.563	0.688	0.813	1.000	1.125	1.250	1.375	1.625
LBS	0.25	0.24	0.48	0.74	1.25	2.03	2.17	4.60	5.11	8.37	12.02	21.76

CLASS 9000 – Figure No. 19003

PIPE SIZE	1/8	1/4	3/8	1/2	3/4	1	1-1/4	1-1/2	2	2-1/2	3	4
A	1.063	1.313	1.500	1.813	2.188	2.500	3.000	3.313	4.000	4.750	5.875	---
B	0.750	0.875	1.000	1.125	1.313	1.375	1.688	1.781	2.063	2.500	3.125	---
C	0.426	0.560	0.693	0.859	1.071	1.335	1.682	1.922	2.410	2.910	3.536	---
D	0.438	0.500	0.500	0.500	0.563	0.563	0.813	0.781	0.938	1.000	1.250	---
E	0.313	0.375	0.563	0.625	0.750	0.813	0.875	1.000	1.125	1.500	1.875	---
LBS	0.33	0.56	0.85	1.41	2.28	3.04	5.23	6.51	10.44	18.75	32.85	---

Clase de presión soldadura	Esesor de tubo
Class 3000	S80/XH
Class 6000	S160
Class 9000	XXH

# Socket Weld Street Elbow

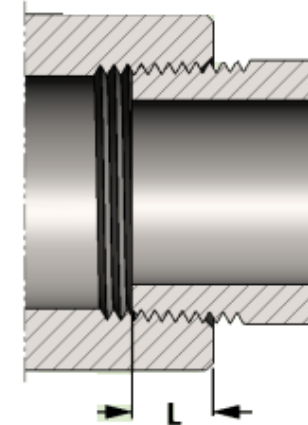
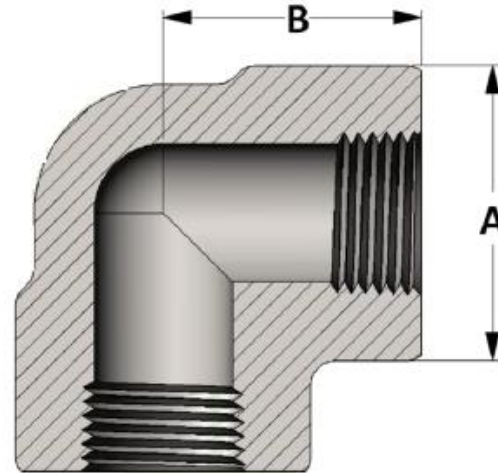


CLASS 3000 – Figure No. 13005									
PIPE SIZE	1/8	1/4	3/8	1/2	3/4	1	1-1/4	1-1/2	2
A	1.000	1.000	1.313	1.500	1.750	2.000	2.438	2.750	3.313
B	0.875	0.875	1.125	1.250	1.375	1.750	2.000	2.125	2.500
C	1.250	1.250	1.500	1.688	1.875	2.250	2.625	2.875	3.313
D	0.426	0.560	0.693	0.859	1.071	1.335	1.682	1.922	2.410
E	0.438	0.438	0.438	0.500	0.563	0.625	0.688	0.750	0.875
LBS	0.21	0.19	0.39	0.55	0.85	1.40	2.05	2.55	4.30

CLASS 6000 – Figure No. 16005									
PIPE SIZE	1/8	1/4	3/8	1/2	3/4	1	1-1/4	1-1/2	2
A	1.000	1.313	1.500	1.750	2.000	2.438	2.750	3.313	---
B	0.875	1.125	1.250	1.375	1.750	2.000	2.125	2.500	---
C	1.250	1.500	1.688	1.875	2.250	2.625	2.875	3.313	---
D	0.426	0.560	0.693	0.859	1.071	1.335	1.682	1.922	---
E	0.438	0.438	0.500	0.563	0.625	0.688	0.750	0.875	---
LBS	0.23	0.45	0.67	1.02	1.80	2.90	3.55	6.57	---

Clase de presión soldadura	Espesor de tubo
Class 3000	S80/XH
Class 6000	S160

# Threaded 90° elbow



SIZE	L	SIZE	L
1/8	0.273	2	0.697
1/4	0.395	2-1/2	0.933
3/8	0.407	3	1.016
1/2	0.534	3-1/2	1.071
3/4	0.553	4	1.094
1	0.661	5	1.187
1-1/4	0.681	6	1.208
1-1/2	0.681	8	1.313

LONGITUD DE LA ROSCA A TORNILLADA AL CONECTOR

PIPE SIZE	CLASS 2000 - Figure No. 02001												
	1/8	1/4	3/8	1/2	3/4	1	1-1/4	1-1/2	2	2-1/2	3	3-1/2	4
A	0.875	0.875	1.063	1.313	1.500	1.813	2.188	2.500	3.000	3.625	4.313	---	5.875
B	0.875	0.875	0.969	1.125	1.313	1.500	1.750	2.000	2.375	3.000	3.375	---	4.188
LBS	0.20	0.18	0.25	0.51	0.73	1.07	1.63	2.31	3.61	7.60	11.93	---	24.05

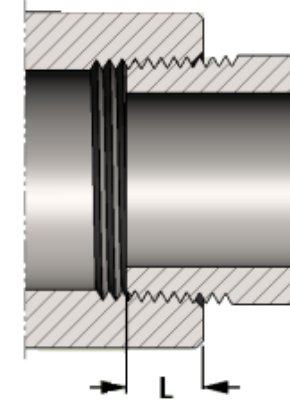
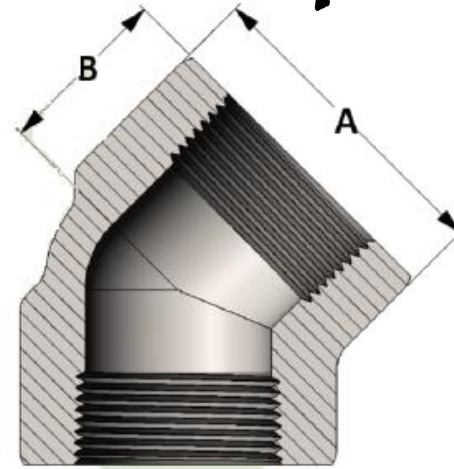
PIPE SIZE	CLASS 3000 - Figure No. 03001												
	1/8	1/4	3/8	1/2	3/4	1	1-1/4	1-1/2	2	2-1/2	3	3-1/2	4
A	0.875	1.063	1.313	1.500	1.813	2.188	2.500	3.000	3.313	4.000	4.750	5.875	5.875
B	0.875	0.969	1.125	1.313	1.500	1.750	2.000	2.375	2.500	3.250	3.750	4.188	4.188
LBS	0.20	0.33	0.61	0.92	1.47	2.33	2.98	5.72	6.53	11.03	18.83	29.37	24.05

PIPE SIZE	CLASS 6000 - Figure No. 06001												
	1/8	1/4	3/8	1/2	3/4	1	1-1/4	1-1/2	2	2-1/2	3	3-1/2	4
A	1.063	1.313	1.500	1.813	2.188	2.500	3.000	3.313	4.000	4.750	5.875	5.875	---
B	0.969	1.125	1.313	1.500	1.750	2.000	2.375	2.500	3.250	3.750	4.188	4.188	---
LBS	0.35	0.65	1.79	3.18	2.75	7.42	6.45	16.80	19.08	24.90	37.70	31.10	---

Clase de presión soldadura	Espesor de tubo
Class 2000	S80 / XH
Class 3000	S160
Class 6000	XXH



# Threaded 45° elbow



SIZE	L	SIZE	L
1/8	0.273	2	0.697
1/4	0.395	2-1/2	0.933
3/8	0.407	3	1.016
1/2	0.534	3-1/2	1.071
3/4	0.553	4	1.094
1	0.661	5	1.187
1-1/4	0.681	6	1.208
1-1/2	0.681	8	1.313

PIPE SIZE	CLASS 2000 – Figure No. 02003												
	1/8	1/4	3/8	1/2	3/4	1	1-1/4	1-1/2	2	2-1/2	3	3-1/2	4
A	1.063	1.063	1.063	1.313	1.500	1.813	2.188	2.500	3.000	4.000	4.750	---	5.875
B	0.750	0.750	0.750	0.875	1.000	1.125	1.313	1.375	1.688	2.063	2.500	---	3.125
LBS	0.29	0.29	0.21	0.42	0.60	0.97	1.35	1.83	3.08	7.80	13.52	---	19.35

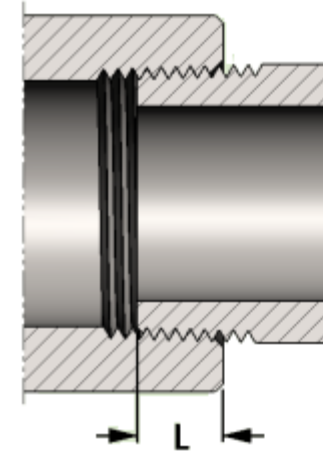
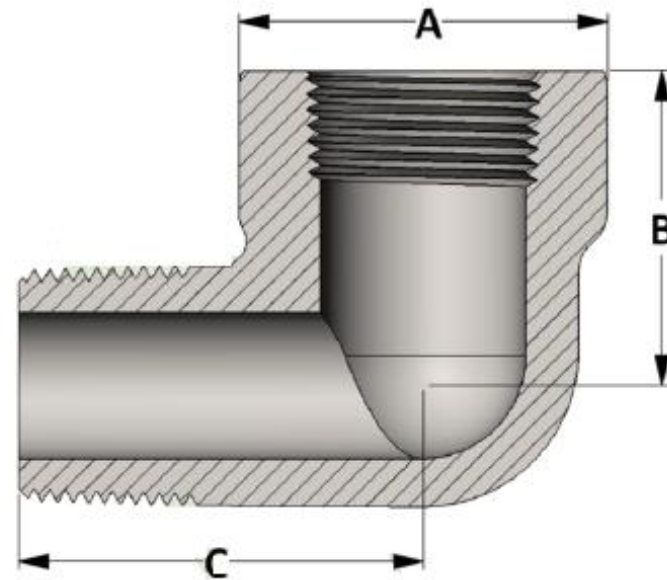
PIPE SIZE	CLASS 3000 – Figure No. 03003												
	1/8	1/4	3/8	1/2	3/4	1	1-1/4	1-1/2	2	2-1/2	3	3-1/2	4
A	1.063	1.063	1.313	1.500	1.813	2.188	2.500	3.000	3.313	4.000	4.750	5.875	5.875
B	0.750	0.750	0.875	1.000	1.125	1.313	1.375	1.688	1.781	2.063	2.500	3.125	3.125
LBS	0.29	0.25	0.50	0.76	1.23	1.87	2.29	4.40	4.62	7.84	13.52	24.70	19.35

PIPE SIZE	CLASS 6000 – Figure No. 06003												
	1/8	1/4	3/8	1/2	3/4	1	1-1/4	1-1/2	2	2-1/2	3	3-1/2	4
A	1.063	1.313	1.500	1.813	2.188	2.500	3.000	3.313	4.000	4.750	5.875	5.875	---
B	0.750	0.875	1.000	1.125	1.313	1.375	1.688	1.781	2.063	2.500	3.125	3.125	---
LBS	0.28	0.57	0.86	1.41	2.25	2.81	5.25	6.16	10.04	15.56	32.42	28.72	---

LONGITUD DE LA ROSCA A TORNILLADA AL CONECTOR

Clase de presión roscada	Espesor de tubo
Class 2000	S80/XH
Class 3000	S160
Class 6000	XXH

# Threaded Street elbow



SIZE	L	SIZE	L
1/8	0.273	2	0.697
1/4	0.395	2-1/2	0.933
3/8	0.407	3	1.016
1/2	0.534	3-1/2	1.071
3/4	0.553	4	1.094
1	0.661	5	1.187
1-1/4	0.681	6	1.208
1-1/2	0.681	8	1.313

LONGITUD DE LA ROSCA ATORNILLADA AL CONECTOR

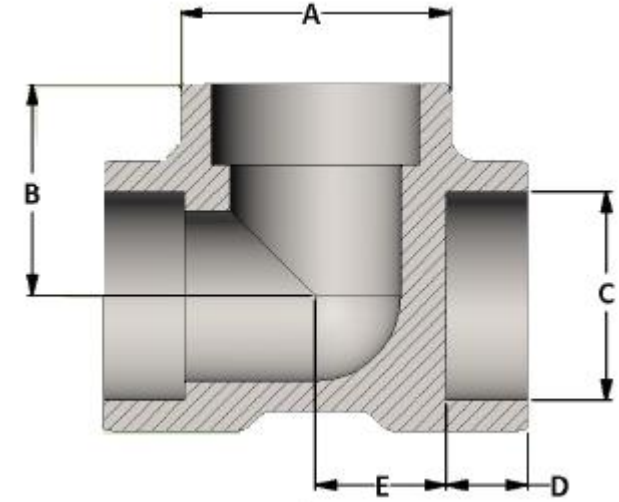
CLASS 3000 - Figure No. 03005									
PIPE SIZE	1/8	1/4	3/8	1/2	3/4	1	1-1/4	1-1/2	2
A	1.000	1.000	1.313	1.500	1.750	2.000	2.438	2.750	3.313
B	0.875	0.875	1.125	1.250	1.375	1.750	2.000	2.125	2.500
C	1.250	1.250	1.500	1.688	1.875	2.250	2.625	2.875	3.313
LBS	0.22	0.20	0.45	0.59	0.89	1.33	2.45	3.04	4.84

CLASS 6000 - Figure No. 06005									
PIPE SIZE	1/8	1/4	3/8	1/2	3/4	1	1-1/4	1-1/2	2
A	1.000	1.313	1.500	1.750	2.000	2.438	2.750	3.313	---
B	0.875	1.125	1.250	1.375	1.750	2.000	2.125	2.500	---
C	1.250	1.500	1.688	1.875	2.250	2.625	2.875	3.313	---
LBS	0.22	0.44	0.99	1.06	1.74	3.16	3.94	6.47	---

Clase de presión roscada	Espesor de tubo
Class 3000	S160
Class 6000	XXH



# Leg 90° Elbow



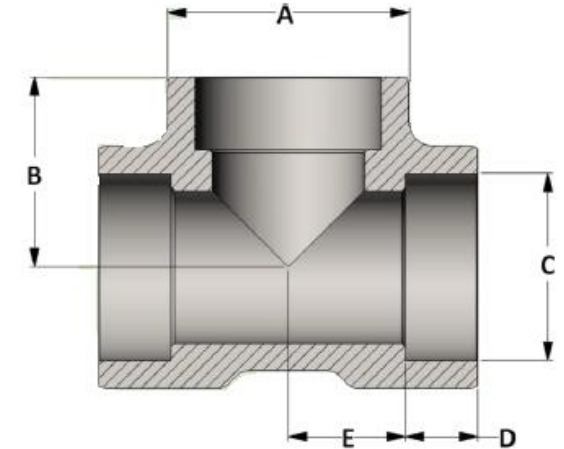
CLASS 3000 – Figure No. 13240												
PIPE SIZE	1/8	1/4	3/8	1/2	3/4	1	1-1/4	1-1/2	2	2-1/2	3	4
A	0.875	0.875	1.063	1.313	1.500	1.813	2.188	2.500	3.000	3.625	4.313	5.875
B	0.875	0.875	0.969	1.125	1.313	1.500	1.750	2.000	2.375	3.000	3.375	4.188
C	0.426	0.560	0.693	0.859	1.071	1.335	1.682	1.922	2.410	2.910	3.536	4.545
D	0.438	0.438	0.438	0.500	0.563	0.625	0.688	0.750	0.875	1.375	1.125	1.566
E	0.438	0.438	0.531	0.625	0.750	0.875	1.063	1.250	1.500	1.625	2.250	2.625
LBS	0.26	0.23	0.33	0.65	0.94	1.40	2.20	3.29	5.05	9.50	14.25	29.25

CLASS 6000 – Figure No. 16240												
PIPE SIZE	1/8	1/4	3/8	1/2	3/4	1	1-1/4	1-1/2	2	2-1/2	3	4
A	0.875	1.063	1.313	1.500	1.813	2.188	2.500	3.000	3.313	4.000	4.750	5.875
B	0.875	0.969	1.125	1.313	1.500	1.750	2.000	2.375	2.500	3.250	3.750	4.188
C	0.426	0.560	0.693	0.859	1.071	1.335	1.682	1.922	2.410	2.910	3.536	4.545
D	0.438	0.438	0.500	0.563	0.625	0.688	0.750	0.875	0.875	1.000	1.250	1.563
E	0.438	0.531	0.625	0.750	0.875	1.063	1.250	1.500	1.625	2.250	2.500	2.625
LBS	0.45	0.42	0.85	1.22	1.98	3.20	4.32	8.59	9.35	16.09	26.54	33.63

CLASS 9000 – Figure No. 19240												
PIPE SIZE	1/8	1/4	3/8	1/2	3/4	1	1-1/4	1-1/2	2	2-1/2	3	4
A	1.063	1.313	1.500	1.813	2.188	2.500	3.000	3.313	3.625	4.313	5.875	---
B	0.969	1.125	1.313	1.500	1.750	2.000	2.375	2.500	3.000	3.375	4.188	---
C	0.426	0.560	0.693	0.859	1.071	1.335	1.682	1.922	2.410	2.910	3.536	---
D	0.438	0.500	0.500	0.500	0.625	0.750	1.000	1.000	0.875	1.000	1.313	---
E	0.531	0.625	0.813	1.000	1.125	1.250	1.375	1.500	2.125	2.375	2.875	---
LBS	0.55	0.92	1.39	2.40	3.95	5.84	8.03	11.53	16.93	25.03	51.36	---

Clase de presión de soldadura	Espesor de tubo
Class 3000	S80/XH
Class 6000	S160
Class 9000	XXH

# Socket Weld Tee



CLASS 3000 – Figure No. 13002												
PIPE SIZE	1/8	1/4	3/8	1/2	3/4	1	1-1/4	1-1/2	2	2-1/2	3	4
A	0.875	0.875	1.063	1.313	1.500	1.813	2.188	2.500	3.000	3.625	4.313	5.875
B	0.875	0.875	0.969	1.125	1.313	1.500	1.750	2.000	2.375	3.000	3.375	4.188
C	0.426	0.560	0.693	0.859	1.071	1.335	1.682	1.922	2.410	2.910	3.536	4.545
D	0.438	0.438	0.438	0.500	0.563	0.625	0.688	0.750	0.875	1.375	1.125	1.566
E	0.438	0.438	0.531	0.625	0.750	0.875	1.063	1.250	1.500	1.625	2.250	2.625
LBS	0.25	0.22	0.31	0.62	0.88	1.30	2.00	2.99	4.60	8.49	13.85	27.14

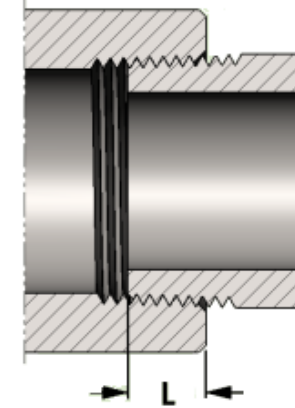
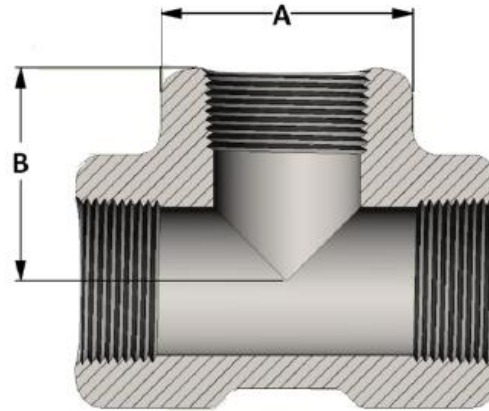
CLASS 6000 – Figure No. 16002												
PIPE SIZE	1/8	1/4	3/8	1/2	3/4	1	1-1/4	1-1/2	2	2-1/2	3	4
A	0.875	1.063	1.313	1.500	1.813	2.188	2.500	3.000	3.313	4.000	4.750	5.875
B	0.875	0.969	1.125	1.313	1.500	1.750	2.000	2.375	2.500	3.250	3.750	4.188
C	0.426	0.560	0.693	0.859	1.071	1.335	1.682	1.922	2.410	2.910	3.536	4.545
D	0.438	0.438	0.500	0.563	0.625	0.688	0.750	0.875	0.875	1.000	1.250	1.563
E	0.438	0.531	0.625	0.750	0.875	1.063	1.250	1.500	1.625	2.250	2.500	2.625
LBS	0.44	0.41	0.81	1.18	1.93	3.10	4.22	7.59	8.70	15.09	25.24	32.51

CLASS 9000 – Figure No. 19002												
PIPE SIZE	1/8	1/4	3/8	1/2	3/4	1	1-1/4	1-1/2	2	2-1/2	3	4
A	1.063	1.313	1.500	1.813	2.188	2.500	3.000	3.313	3.625	4.313	5.875	---
B	0.969	1.125	1.313	1.500	1.750	2.000	2.375	2.500	3.000	3.375	4.188	---
C	0.426	0.560	0.693	0.859	1.071	1.335	1.682	1.922	2.410	2.910	3.536	---
D	0.438	0.500	0.500	0.500	0.625	0.750	1.000	1.000	0.875	1.000	1.313	---
E	0.531	0.625	0.813	1.000	1.125	1.250	1.375	1.500	2.125	2.375	2.875	---
LBS	0.54	0.90	1.37	2.33	3.81	5.41	7.63	10.88	15.48	23.32	49.77	---

Clase de presión de soldadura	Espesor de tubo
Class 3000	S80/XH
Class 6000	S160
Class 9000	XXH



# Threaded Tee



SIZE	L	SIZE	L
1/8	0.273	2	0.697
1/4	0.395	2-1/2	0.933
3/8	0.407	3	1.016
1/2	0.534	3-1/2	1.071
3/4	0.553	4	1.094
1	0.661	5	1.187
1-1/4	0.681	6	1.208
1-1/2	0.681	8	1.313

LONGITUD DE LA ROSCA A TORNILLADA AL CONECTOR

PIPE SIZE	CLASS 2000 – Figure No. 02002												
	1/8	1/4	3/8	1/2	3/4	1	1-1/4	1-1/2	2	2-1/2	3	3-1/2	4
A	0.875	0.875	1.063	1.313	1.500	1.813	2.188	2.500	3.000	3.625	4.313	---	5.875
B	0.875	0.875	0.969	1.125	1.313	1.500	1.750	2.000	2.375	3.000	3.375	---	4.188
LBS	0.31	0.24	0.37	0.67	0.91	1.38	1.96	3.10	4.98	9.31	13.32	---	28.02

PIPE SIZE	CLASS 3000 – Figure No. 03002												
	1/8	1/4	3/8	1/2	3/4	1	1-1/4	1-1/2	2	2-1/2	3	3-1/2	4
A	0.875	1.063	1.313	1.500	1.813	2.188	2.500	3.000	3.313	4.000	4.750	5.875	5.875
B	0.875	0.969	1.125	1.313	1.500	1.750	2.000	2.375	2.500	3.250	3.750	4.188	4.188
LBS	0.31	0.45	0.78	1.20	1.87	2.95	3.92	7.35	7.58	14.61	22.82	36.19	28.02

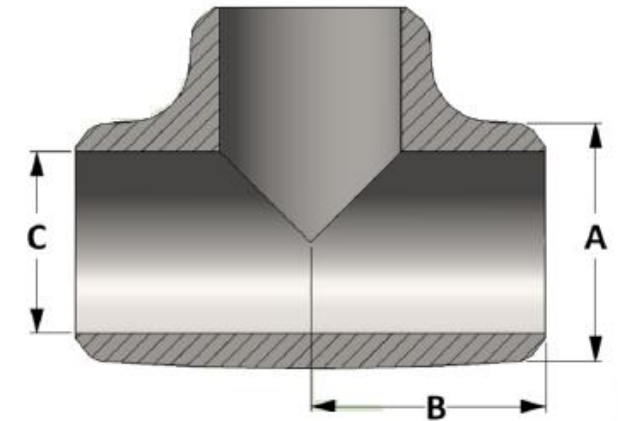
PIPE SIZE	CLASS 6000 – Figure No. 06002												
	1/8	1/4	3/8	1/2	3/4	1	1-1/4	1-1/2	2	2-1/2	3	3-1/2	4
A	1.063	1.313	1.500	1.813	2.188	2.500	3.000	3.313	4.000	4.750	5.875	5.875	---
B	0.969	1.125	1.313	1.500	1.750	2.000	2.375	2.500	3.250	3.750	4.188	4.188	---
LBS	0.44	0.91	1.36	2.21	3.57	5.11	8.25	10.46	17.54	30.65	49.80	38.23	---

Clase de presión de rosca	Espesor de tubo
Class 2000	S80/XH
Class 3000	S160
Class 6000	XXH



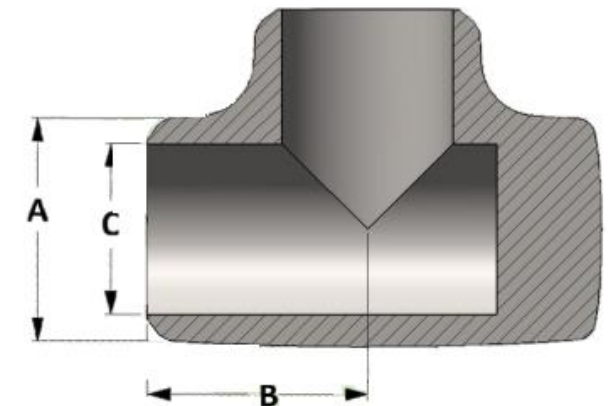
# Butt Weld Tee

PIPE SIZE	A	B	STD/S40		XH/S80		S160		XXH	
			C	LBS	C	LBS	C	LBS	C	LBS
1/2	0.875	1.000	0.622	0.24	0.546	0.28	0.464	0.32	0.252	0.38
3/4	1.063	1.120	0.824	0.34	0.742	0.41	0.612	0.50	0.434	0.59
1	1.375	1.500	1.049	0.71	0.957	0.85	0.815	1.04	0.599	1.24
1-1/4	1.660	1.880	1.380	1.17	1.278	1.43	1.160	1.70	0.896	2.18
1-1/2	1.900	2.250	1.610	1.71	1.500	2.11	1.338	2.65	1.100	3.28
2	2.375	2.500	2.067	2.43	1.939	3.08	1.689	4.21	1.503	4.91
2-1/2	2.875	3.000	2.469	5.83	2.323	6.88	2.125	8.17	1.771	10.08
3	3.500	3.380	3.068	8.46	2.900	10.12	2.624	12.59	2.300	15.004
4	4.500	4.120	4.026	14.33	3.826	17.48	3.438	22.97	3.152	26.49

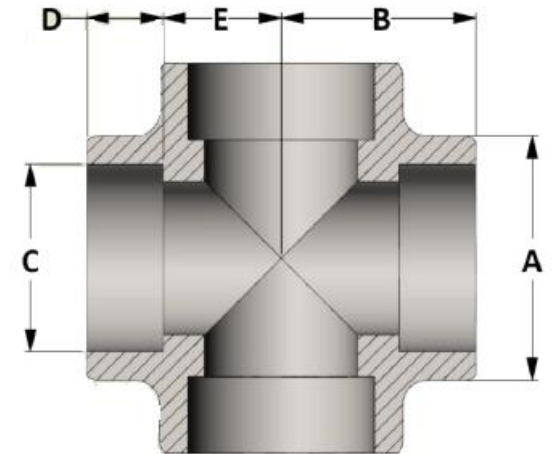


# Cushion Tee

PIPE SIZE	A	B	STD/S40		XH/S80		S160		XXH	
			C	LBS	C	LBS	C	LBS	C	LBS
1/2	0.875	1.000	0.622	0.28	0.546	0.32	0.464	0.40	0.252	0.42
3/4	1.063	1.120	0.824	0.38	0.742	0.45	0.612	0.55	0.434	0.62
1	1.375	1.500	1.049	0.79	0.957	0.85	0.815	1.15	0.599	1.35
1-1/4	1.660	1.880	1.380	1.26	1.278	1.31	1.160	1.95	0.896	2.35
1-1/2	1.900	2.250	1.610	1.85	1.500	1.95	1.338	2.85	1.100	3.12
2	2.375	2.500	2.067	2.66	1.939	2.81	1.689	4.68	1.503	5.10
2-1/2	2.875	3.000	2.469	6.10	2.323	6.50	2.125	8.98	1.771	10.62
3	3.500	3.380	3.068	9.05	2.900	9.75	2.624	13.45	2.300	15.75
4	4.500	4.120	4.026	15.25	3.826	18.50	3.438	23.75	3.152	27.49



# Socket Weld Cross

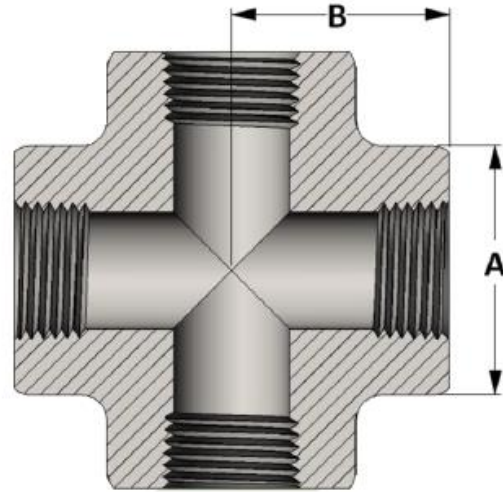


CLASS 3000 – Figure No. 13004												
PIPE SIZE	1/8	1/4	3/8	1/2	3/4	1	1-1/4	1-1/2	2	2-1/2	3	4
A	1.063	1.063	1.063	1.313	1.500	1.813	2.188	2.500	3.000	3.625	4.313	5.875
B	0.969	0.969	0.969	1.125	1.313	1.500	1.750	2.000	2.375	3.000	3.375	4.188
C	0.426	0.560	0.693	0.859	1.071	1.335	1.682	1.922	2.410	2.910	3.536	4.545
D	0.438	0.438	0.438	0.500	0.563	0.625	0.688	0.750	0.875	1.625	1.125	1.566
E	0.531	0.531	0.531	0.625	0.750	0.875	1.063	1.250	1.500	1.625	2.250	2.625
LBS	0.47	0.40	0.35	0.73	0.96	1.53	2.32	3.59	5.50	14.97	17.56	30.84

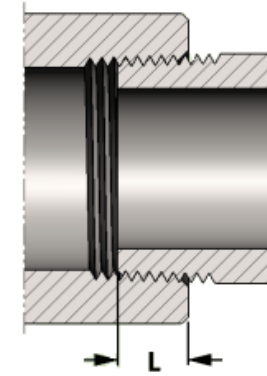
CLASS 6000 – Figure No. 16004												
PIPE SIZE	1/8	1/4	3/8	1/2	3/4	1	1-1/4	1-1/2	2	2-1/2	3	4
A	1.063	1.063	1.313	1.500	1.813	2.188	2.500	3.000	3.313	4.000	4.750	5.875
B	0.969	0.969	1.125	1.313	1.500	1.750	2.000	2.375	2.500	3.250	3.750	4.188
C	0.426	0.560	0.693	0.859	1.071	1.335	1.682	1.922	2.410	2.910	3.536	4.545
D	0.438	0.438	0.500	0.563	0.625	0.688	0.750	0.875	0.875	1.000	1.250	1.563
E	0.531	0.531	0.625	0.750	0.875	1.063	1.250	1.500	1.625	2.250	2.500	2.625
LBS	0.65	0.62	0.98	1.35	2.29	3.67	5.20	9.26	9.03	18.28	29.07	38.28

CLASS 9000 – Figure No. 19004												
PIPE SIZE	1/8	1/4	3/8	1/2	3/4	1	1-1/4	1-1/2	2	2-1/2	3	4
A	1.063	1.313	1.500	1.813	2.188	2.500	3.000	3.313	3.625	4.313	5.875	---
B	0.969	1.125	1.313	1.500	1.750	2.000	2.375	2.500	3.000	3.375	4.188	---
C	0.426	0.560	0.693	0.859	1.071	1.335	1.682	1.922	2.410	2.910	3.536	---
D	0.438	0.500	0.500	0.500	0.625	0.750	1.000	1.000	0.875	1.000	1.313	---
E	0.531	0.625	0.813	1.000	1.125	1.250	1.375	1.500	2.125	2.375	2.875	---
LBS	0.66	1.11	1.71	2.78	4.89	6.35	10.27	12.62	25.41	26.50	60.35	---

Clase de presión de soldadas	Espesor de tubo
Class 3000	S80/XH
Class 6000	S160
Class 9000	XXH



# Threaded Cross



SIZE	L	SIZE	L
1/8	0.273	2	0.697
1/4	0.395	2-1/2	0.933
3/8	0.407	3	1.016
1/2	0.534	3-1/2	1.071
3/4	0.553	4	1.094
1	0.661	5	1.187
1-1/4	0.681	6	1.208
1-1/2	0.681	8	1.313

PIPE SIZE	CLASS 2000 - Figure No. 02004												
	1/8	1/4	3/8	1/2	3/4	1	1-1/4	1-1/2	2	2-1/2	3	3-1/2	4
A	1.063	1.063	1.063	1.313	1.500	1.813	2.188	2.500	3.000	3.625	4.313	---	5.875
B	0.969	0.969	0.969	1.125	1.313	1.500	1.750	2.000	2.375	3.000	3.375	---	4.188
LBS	0.54	0.52	0.40	0.84	1.20	1.67	2.48	3.41	5.51	16.66	27.90	---	33.28

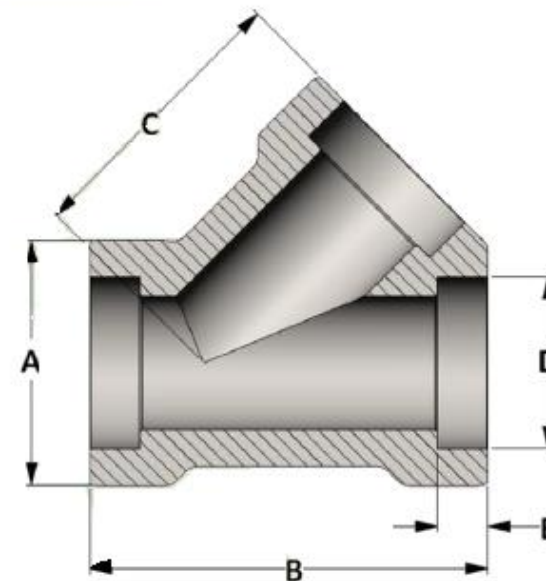
LONGITUD DE LA ROSCA A TORNILLADA AL CONECTOR

PIPE SIZE	CLASS 3000 - Figure No. 03004												
	1/8	1/4	3/8	1/2	3/4	1	1-1/4	1-1/2	2	2-1/2	3	3-1/2	4
A	1.063	1.063	1.313	1.500	1.813	2.188	2.500	3.000	3.313	4.000	4.750	5.875	5.875
B	0.969	0.969	1.125	1.313	1.500	1.750	2.000	2.375	2.500	3.250	3.750	4.188	4.188
LBS	0.54	0.52	1.02	1.54	2.27	3.68	4.98	8.68	8.57	16.66	27.89	45.06	33.28

Clase de presión de rosca	Espesor de tubo
Class 2000	S80 /XH
Class 3000	S160
Class 6000	XXH

PIPE SIZE	CLASS 6000 - Figure No. 06004												
	1/8	1/4	3/8	1/2	3/4	1	1-1/4	1-1/2	2	2-1/2	3	3-1/2	4
A	1.063	1.313	1.500	1.813	2.188	2.500	3.000	3.313	4.000	4.750	5.875	5.875	---
B	0.969	1.125	1.313	1.500	1.750	2.000	2.375	2.500	3.250	3.750	4.188	4.188	---
LBS	0.54	1.14	1.71	2.67	4.38	5.92	10.15	11.65	21.71	36.85	54.83	45.06	---

# Socket Weld Lateral



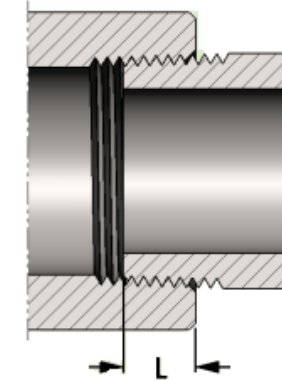
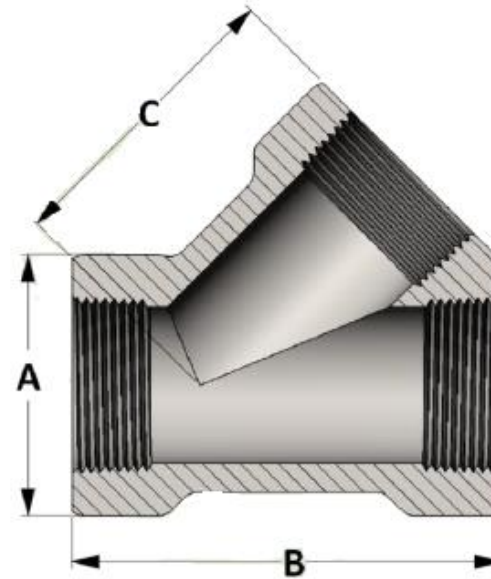
CLASS 3000 – Figure No. 13006										
PIPE SIZE	1/8	1/4	3/8	1/2	3/4	1	1-1/4	1-1/2	2	2-1/2
A	1.500	1.500	1.500	1.500	1.750	2.000	2.438	2.750	3.313	4.000
B	2.469	2.469	2.469	2.469	2.969	3.469	3.969	4.469	5.969	7.469
C	1.750	1.750	1.750	1.750	2.125	2.500	2.813	3.188	4.375	5.313
D	0.426	0.560	0.693	0.859	1.071	1.335	1.682	1.922	2.410	2.910
E	0.468	0.468	0.468	0.468	0.593	0.593	0.593	0.593	0.718	0.718
LBS	1.30	1.21	1.09	0.94	1.47	2.23	3.31	4.89	9.68	18.65

CLASS 6000 – Figure No. 16006										
PIPE SIZE	1/8	1/4	3/8	1/2	3/4	1	1-1/4	1-1/2	2	2-1/2
A	1.500	1.500	1.500	1.500	1.750	2.000	2.438	2.750	3.313	4.000
B	2.469	2.469	2.469	2.469	2.969	3.469	3.969	4.469	5.969	7.469
C	1.750	1.750	1.750	1.750	2.125	2.500	2.813	3.188	4.375	5.313
D	0.426	0.560	0.693	0.859	1.071	1.335	1.682	1.922	2.410	2.910
E	0.468	0.468	0.468	0.468	0.593	0.593	0.593	0.593	0.718	0.718
LBS	1.32	1.26	1.17	1.04	1.66	2.70	3.84	5.57	11.63	21.86

CLASS 9000 – Figure No. 19006										
PIPE SIZE	1/8	1/4	3/8	1/2	3/4	1	1-1/4	1-1/2	2	2-1/2
A	---	---	---	1.750	2.000	2.438	2.750	3.313	4.000	---
B	---	---	---	2.969	3.469	3.969	4.469	5.969	7.469	---
C	---	---	---	2.125	2.500	2.813	3.188	4.375	5.313	---
D	---	---	---	0.859	1.071	1.335	1.682	1.922	2.410	---
E	---	---	---	0.468	0.593	0.593	0.593	0.593	0.718	---
LBS	---	---	---	2.17	3.34	4.91	7.25	15.63	27.93	---

Clase de presión de soldada	Esesor de tubo
Class 3000	S80/XH
Class 6000	S160
Class 9000	XXH

# Threaded Lateral



SIZE	L	SIZE	L
1/8	0.273	2	0.697
1/4	0.395	2-1/2	0.933
3/8	0.407	3	1.016
1/2	0.534	3-1/2	1.071
3/4	0.553	4	1.094
1	0.661	5	1.187
1-1/4	0.681	6	1.208
1-1/2	0.681	8	1.313

LONGITUD DE LA ROSCA A TORNILLADA AL CONECTOR

CLASS 3000 – Figure No. 03006

PIPE SIZE	1/8	1/4	3/8	1/2	3/4	1	1-1/4	1-1/2	2	2-1/2
A	1.500	1.500	1.500	1.500	1.750	2.000	2.438	2.750	3.313	4.000
B	2.500	2.500	2.500	2.500	3.000	3.500	4.000	4.500	6.000	7.500
C	1.750	1.750	1.750	1.750	2.125	2.500	2.813	3.188	4.375	5.313
LBS	1.27	1.27	1.12	0.95	1.51	2.21	2.45	4.72	9.41	18.69

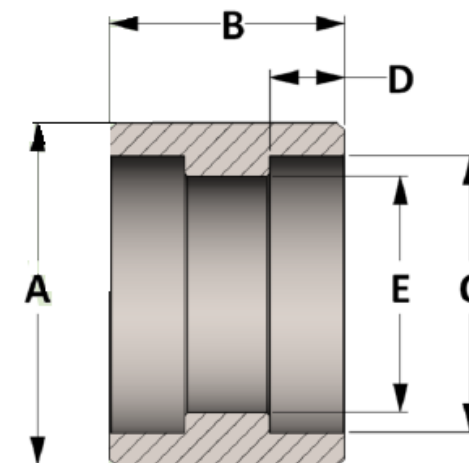
CLASS 6000 – Figure No. 06006

PIPE SIZE	1/8	1/4	3/8	1/2	3/4	1	1-1/4	1-1/2	2	2-1/2
A	1.500	1.500	1.500	1.750	2.000	2.438	2.750	3.313	4.000	---
B	2.500	2.500	2.500	3.000	3.500	4.000	4.500	6.000	7.500	---
C	1.750	1.750	1.750	2.125	2.500	2.813	3.188	4.375	5.313	---
LBS	1.31	1.31	1.18	1.84	2.75	4.54	5.73	11.84	16.80	---

Clase de presión de rosca	Espesor de tubo
Class 3000	S160
Class 6000	XXH



# Socket Weld Coupling



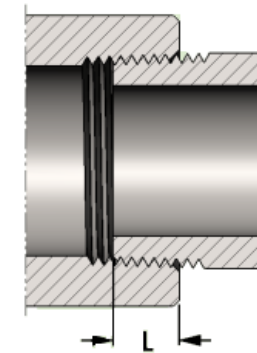
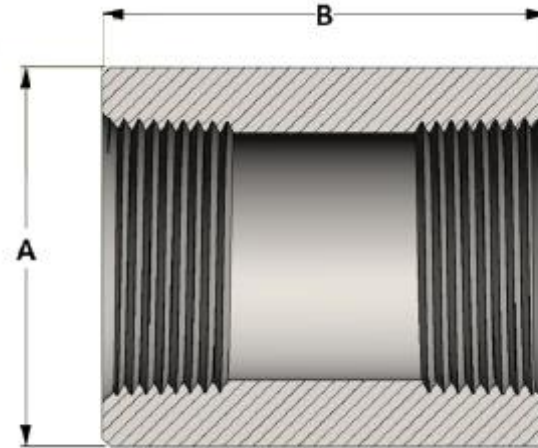
PIPE SIZE	CLASS 3000 – Figure No. 13007												
	1/8	1/4	3/8	1/2	3/4	1	1-1/4	1-1/2	2	2-1/2	3	3-1/2	4
A	0.750	0.875	1.063	1.250	1.500	1.813	2.250	2.500	3.000	3.625	4.313	5.000	5.500
B	1.125	1.125	1.125	1.250	1.438	1.563	1.563	1.563	2.063	2.063	2.063	2.313	2.313
C	0.426	0.560	0.693	0.859	1.071	1.335	1.682	1.922	2.410	2.910	3.536	4.036	4.545
D	0.438	0.438	0.438	0.438	0.531	0.531	0.531	0.531	0.656	0.656	0.656	0.781	0.781
E	0.269	0.364	0.493	0.622	0.824	1.049	1.380	1.610	2.067	2.469	3.068	3.548	4.026
LBS	0.01	0.12	0.17	0.25	0.39	0.58	0.90	1.01	1.74	2.51	3.34	5.26	5.55

PIPE SIZE	CLASS 6000 – Figure No. 16007												
	1/8	1/4	3/8	1/2	3/4	1	1-1/4	1-1/2	2	2-1/2	3	3-1/2	4
A	0.875	1.000	1.250	1.500	1.750	2.000	2.500	2.750	3.625	4.250	5.000	6.000	6.000
B	1.125	1.125	1.125	1.250	1.438	1.563	1.563	1.563	2.063	2.063	2.063	2.313	2.313
C	0.426	0.560	0.693	0.859	1.071	1.335	1.682	1.922	2.410	2.910	3.536	4.046	4.545
D	0.438	0.438	0.438	0.438	0.531	0.531	0.531	0.531	0.656	0.656	0.656	0.781	0.781
E	0.157	0.250	0.359	0.466	0.614	0.815	1.160	1.338	1.689	2.125	2.625	2.728	3.438
LBS	0.18	0.16	0.29	0.52	0.45	0.90	1.61	1.60	3.92	6.36	7.06	11.65	10.10

PIPE SIZE	CLASS 9000 – Figure No. 19007												
	1/8	1/4	3/8	1/2	3/4	1	1-1/4	1-1/2	2	2-1/2	3	3-1/2	4
A	1.000	1.250	1.750	1.750	2.000	2.500	2.750	3.000	3.625	4.500	5.500	6.000	6.500
B	1.125	1.125	1.125	1.250	1.438	1.563	1.563	1.563	2.063	2.063	2.063	2.313	2.313
C	0.426	0.560	0.693	0.859	1.071	1.335	1.682	1.922	2.410	2.910	3.536	4.036	4.545
D	0.438	0.438	0.438	0.438	0.531	0.531	0.531	0.531	0.656	0.656	0.656	0.781	0.781
E	0.031	0.064	0.171	0.252	0.434	0.599	0.896	1.100	1.503	1.771	2.300	2.728	3.438
LBS	0.21	0.33	0.46	0.76	1.00	1.69	1.90	2.10	4.05	6.40	12.10	14.62	16.21

Clase de presión de sodada	Espesor de tubo
Class 3000	S80/XH
Class 6000	S160
Class 9000	XXH

# Threaded Coupling



SIZE	L	SIZE	L
1/8	0.273	2	0.697
1/4	0.395	2-1/2	0.933
3/8	0.407	3	1.016
1/2	0.534	3-1/2	1.071
3/4	0.553	4	1.094
1	0.661	5	1.187
1-1/4	0.681	6	1.208
1-1/2	0.681	8	1.313

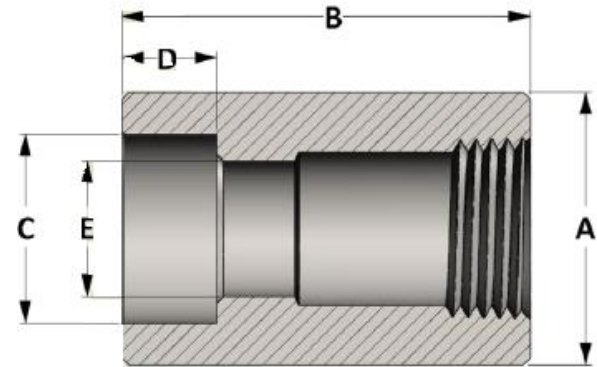
LONGITUD DE LA ROSCA ATORNILLADA AL CONECTOR

PIPE SIZE	CLASS 3000 – Figure No. 03007												
	1/8	1/4	3/8	1/2	3/4	1	1-1/4	1-1/2	2	2-1/2	3	3-1/2	4
A	0.625	0.750	0.875	1.125	1.375	1.750	2.250	2.500	3.000	3.625	4.250	4.750	5.500
B	1.250	1.375	1.500	1.875	2.000	2.375	2.625	3.125	3.375	3.625	4.250	4.500	4.750
LBS	0.08	0.10	0.14	0.29	0.42	0.83	1.58	2.16	2.99	4.75	6.51	7.93	12.37

PIPE SIZE	CLASS 6000 – Figure No. 06007												
	1/8	1/4	3/8	1/2	3/4	1	1-1/4	1-1/2	2	2-1/2	3	3-1/2	4
A	0.875	1.000	1.250	1.500	1.750	2.250	2.500	3.000	3.625	4.250	5.000	5.750	6.250
B	1.250	1.375	1.500	1.875	2.000	2.375	2.625	3.125	3.375	3.625	4.250	4.500	4.750
LBS	0.18	0.23	0.40	0.69	0.95	1.90	2.27	4.11	6.17	9.25	13.65	18.53	22.13

Clase de presión de sodada	Espesor de tubo
Class 3000	S160
Class 6000	XXH

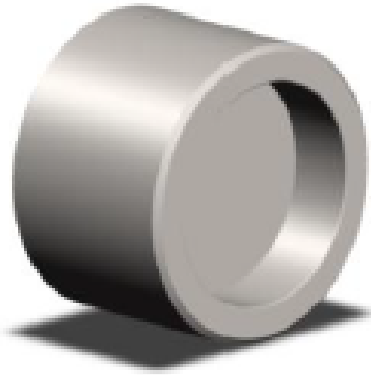
# Socket Weld x Threaded Coupling



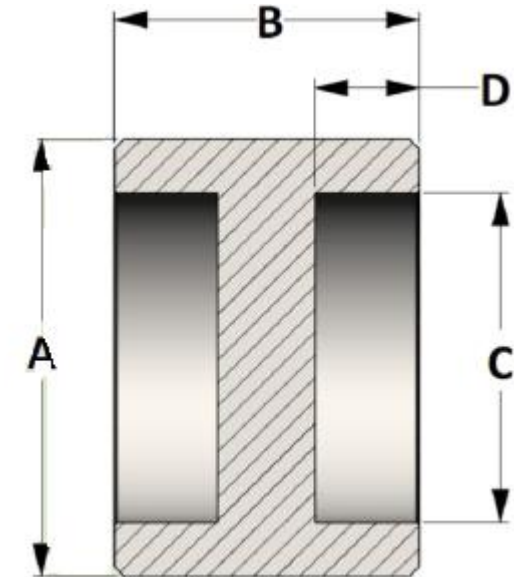
PIPE SIZE	CLASS 3000 – Figure No. 30060											
	1/4	3/8	1/2	3/4	1	1-1/4	1-1/2	2	2-1/2	3	3-1/2	4
A	0.875	1.063	1.250	1.500	1.813	2.250	2.500	3.000	3.625	4.313	5.000	5.500
B	1.375	1.500	1.875	2.000	2.375	2.625	3.125	3.375	3.625	4.250	4.500	4.750
C	0.560	0.693	0.859	1.071	1.335	1.682	1.922	2.410	2.910	3.536	4.036	4.545
D	0.438	0.438	0.438	0.531	0.531	0.531	0.531	0.656	0.656	0.656	0.781	0.781
E	0.364	0.493	0.622	0.824	1.049	1.380	1.610	2.067	2.469	3.068	3.548	4.026
LBS	0.16	0.25	0.41	0.57	0.83	1.62	2.18	3.03	4.89	6.95	11.72	12.77

PIPE SIZE	CLASS 6000 – Figure No. 60060											
	1/4	3/8	1/2	3/4	1	1-1/4	1-1/2	2	2-1/2	3	3-1/2	4
A	1.000	1.250	1.500	1.750	2.000	2.500	2.750	3.625	4.250	5.000	6.000	6.000
B	1.375	1.500	1.875	2.000	2.375	2.625	3.125	3.375	3.625	4.250	4.500	4.750
C	0.560	0.693	0.859	1.071	1.335	1.682	1.922	2.410	2.910	3.536	4.046	4.545
D	0.438	0.438	0.438	0.531	0.531	0.531	0.531	0.656	0.656	0.656	0.781	0.781
E	0.250	0.359	0.466	0.614	0.815	1.160	1.338	1.689	2.125	2.625	2.728	3.438
LBS	0.26	0.40	0.70	0.93	1.96	2.38	4.30	4.10	10.29	16.22	26.89	23.89

PIPE SIZE	CLASS 9000 – Figure No. 90060											
	1/4	3/8	1/2	3/4	1	1-1/4	1-1/2	2	2-1/2	3	3-1/2	4
A	1.250	1.750	1.750	2.000	2.500	2.750	3.000	3.625	4.500	5.500	6.000	6.500
B	1.375	1.500	1.875	2.000	2.375	2.625	3.125	3.375	3.625	4.250	4.500	4.750
C	0.560	0.693	0.859	1.071	1.335	1.682	1.922	2.410	2.910	3.536	4.036	4.545
D	0.438	0.438	0.438	0.531	0.531	0.531	0.531	0.656	0.656	0.656	0.781	0.781
E	0.064	0.171	0.252	0.434	0.599	0.896	1.100	1.503	1.771	2.300	2.728	3.438
LBS	0.42	0.92	1.05	1.89	2.93	3.57	7.26	6.67	11.58	20.14	23.84	27.47



# Blind Coupling



PIPE SIZE	CLASS 3000 – Figure No. 13159												
	1/8	1/4	3/8	1/2	3/4	1	1-1/4	1-1/2	2	2-1/2	3	3-1/2	4
A	0.750	0.875	1.063	1.250	1.500	1.813	2.250	2.500	3.000	3.625	4.313	5.000	5.500
B	1.125	1.125	1.125	1.250	1.437	1.563	1.563	1.563	2.063	2.063	2.063	2.313	2.313
C	0.426	0.560	0.693	0.859	1.071	1.335	1.682	1.922	2.410	2.910	3.536	4.036	4.545
D	0.438	0.438	0.438	0.438	0.531	0.531	0.531	0.531	0.656	0.656	0.656	0.781	0.781
LBS	0.11	0.13	0.19	0.29	0.45	0.72	1.09	1.30	2.44	3.57	4.90	7.22	8.41

PIPE SIZE	CLASS 6000 – Figure No. 16159												
	1/8	1/4	3/8	1/2	3/4	1	1-1/4	1-1/2	2	2-1/2	3	3-1/2	4
A	0.875	1.000	1.250	1.500	1.750	2.000	2.500	2.750	3.625	4.250	5.000	6.000	6.000
B	1.125	1.125	1.125	1.250	1.437	1.563	1.563	1.563	2.063	2.063	2.063	2.313	2.313
C	0.426	0.560	0.693	0.859	1.071	1.335	1.682	1.922	2.410	2.910	3.536	4.046	4.545
D	0.438	0.438	0.438	0.438	0.531	0.531	0.531	0.531	0.656	0.656	0.656	0.781	0.781
LBS	0.16	0.19	0.30	0.48	0.71	0.97	1.51	1.76	4.35	5.83	7.84	12.90	11.38

PIPE SIZE	CLASS 9000 – Figure No. 19159												
	1/8	1/4	3/8	1/2	3/4	1	1-1/4	1-1/2	2	2-1/2	3	3-1/2	4
A	1.000	1.250	1.750	1.750	2.000	2.500	2.750	3.000	3.625	4.500	5.500	6.000	6.500
B	1.125	1.125	1.125	1.250	1.437	1.563	1.563	1.563	2.063	2.063	2.063	2.313	2.313
C	0.426	0.560	0.693	0.859	1.071	1.335	1.682	1.922	2.410	2.910	3.536	4.036	4.545
D	0.438	0.438	0.438	0.438	0.531	0.531	0.531	0.531	0.656	0.656	0.656	0.781	0.781
LBS	0.22	0.33	0.67	0.71	1.01	1.76	1.97	2.26	4.35	6.84	10.26	12.90	14.60

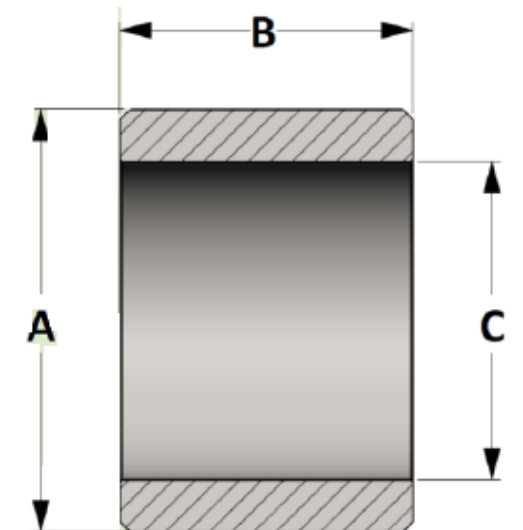


# Blind Coupling

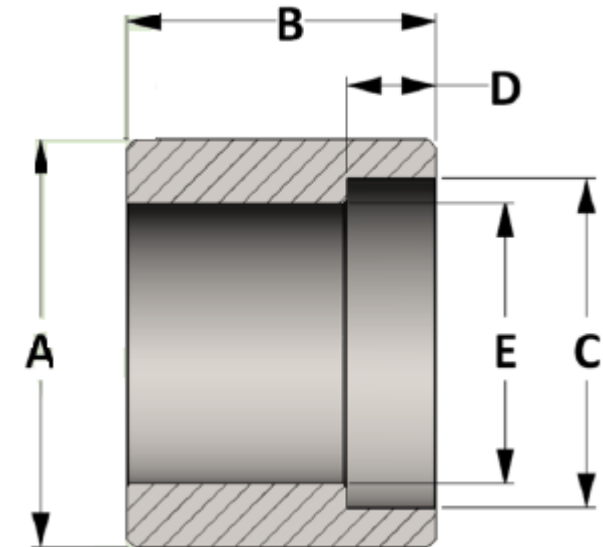
PIPE SIZE	CLASS 3000 – Figure No. 13025												
	1/8	1/4	3/8	1/2	3/4	1	1-1/4	1-1/2	2	2-1/2	3	3-1/2	4
A	0.750	0.875	1.063	1.250	1.500	1.813	2.250	2.500	3.000	3.625	4.313	5.000	5.500
B	1.125	1.125	1.125	1.250	1.437	1.563	1.563	1.563	2.063	2.063	2.063	2.313	2.313
C	0.426	0.560	0.693	0.859	1.071	1.335	1.682	1.922	2.410	2.910	3.536	4.036	4.545
LBS	0.10	0.11	0.16	0.23	0.35	0.52	0.78	0.89	1.47	2.15	2.81	4.49	4.95

PIPE SIZE	CLASS 6000 – Figure No. 16025												
	1/8	1/4	3/8	1/2	3/4	1	1-1/4	1-1/2	2	2-1/2	3	3-1/2	4
A	0.875	1.000	1.250	1.500	1.750	2.000	2.500	2.750	3.625	4.250	5.000	6.000	6.000
B	1.125	1.125	1.125	1.250	1.437	1.563	1.563	1.563	2.063	2.063	2.063	2.313	2.313
C	0.426	0.560	0.693	0.859	1.071	1.335	1.682	1.922	2.410	2.910	3.536	4.046	4.545
LBS	0.15	0.17	0.27	0.42	0.61	0.77	1.19	1.35	3.37	4.41	5.75	10.17	7.92

PIPE SIZE	CLASS 9000 – Figure No. 19025												
	1/8	1/4	3/8	1/2	3/4	1	1-1/4	1-1/2	2	2-1/2	3	3-1/2	4
A	1.000	1.250	1.750	1.750	2.000	2.500	2.750	3.000	3.625	4.500	5.500	6.000	6.500
B	1.125	1.125	1.125	1.250	1.437	1.563	1.563	1.563	2.063	2.063	2.063	2.313	2.313
C	0.426	0.560	0.693	0.859	1.071	1.335	1.682	1.922	2.410	2.910	3.536	4.036	4.545
LBS	0.21	0.31	0.65	0.65	0.91	1.56	1.65	1.85	3.37	5.42	8.17	10.17	11.14



# Socket Weld Half Coupling



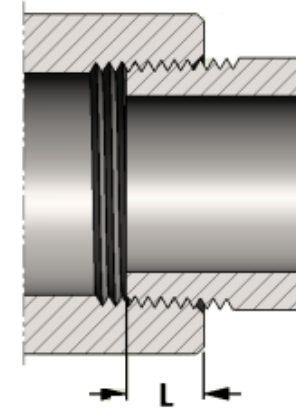
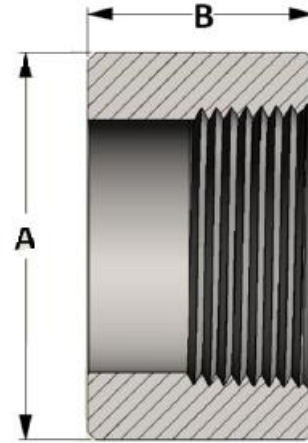
PIPE SIZE	CLASS 3000 – Figure No. 13009												
	1/8	1/4	3/8	1/2	3/4	1	1-1/4	1-1/2	2	2-1/2	3	3-1/2	4
A	0.750	0.875	1.063	1.250	1.500	1.813	2.250	2.500	3.000	3.625	4.313	5.000	5.500
B	1.050	1.050	1.112	1.302	1.456	1.636	1.706	1.766	2.261	2.331	2.391	2.646	2.646
C	0.426	0.560	0.693	0.859	1.071	1.335	1.682	1.922	2.410	2.910	3.536	4.036	4.545
D	0.438	0.438	0.438	0.438	0.531	0.531	0.531	0.531	0.656	0.656	0.656	0.781	0.781
E	0.269	0.364	0.493	0.622	0.824	1.049	1.380	1.610	2.067	2.469	3.068	3.548	4.026
LBS	0.09	0.11	0.14	0.28	0.40	0.65	1.05	1.23	2.05	4.32	5.72	7.49	9.84

PIPE SIZE	CLASS 6000 – Figure No. 16009												
	1/8	1/4	3/8	1/2	3/4	1	1-1/4	1-1/2	2	2-1/2	3	3-1/2	4
A	0.875	1.000	1.250	1.500	1.750	2.000	2.500	2.750	3.625	4.250	5.000	6.000	6.000
B	1.050	1.050	1.112	1.302	1.456	1.636	1.706	1.766	2.261	2.331	2.391	2.646	2.646
C	0.426	0.560	0.693	0.859	1.071	1.335	1.682	1.922	2.410	2.910	3.536	4.046	4.545
D	0.438	0.438	0.438	0.438	0.531	0.531	0.531	0.531	0.656	0.656	0.656	0.781	0.781
E	0.157	0.250	0.359	0.466	0.614	0.815	1.160	1.338	1.689	2.125	2.625	2.728	3.438
LBS	0.16	0.16	0.29	0.54	0.70	1.10	1.61	3.02	4.71	7.35	10.14	13.37	18.35

PIPE SIZE	CLASS 9000 – Figure No. 19009												
	1/8	1/4	3/8	1/2	3/4	1	1-1/4	1-1/2	2	2-1/2	3	3-1/2	4
A	1.000	1.250	1.750	1.750	2.000	2.500	2.750	3.000	3.625	4.500	5.500	6.000	6.500
B	1.050	1.050	1.112	1.302	1.456	1.636	1.706	1.766	2.261	2.331	2.391	2.646	2.646
C	0.426	0.560	0.693	0.859	1.071	1.335	1.682	1.922	2.410	2.910	3.536	4.036	4.545
D	0.438	0.438	0.438	0.438	0.531	0.531	0.531	0.531	0.656	0.656	0.656	0.781	0.781
E	0.031	0.064	0.171	0.252	0.434	0.599	0.896	1.100	1.503	1.771	2.300	2.728	3.438
LBS	0.21	0.33	0.70	0.84	1.12	4.15	3.14	4.95	5.10	8.30	13.77	15.19	16.29

Clase de presión de sodada	Espesor de tubo
Class 3000	S80/XH
Class 6000	S160
Class 9000	XXH

# Threaded Half Coupling



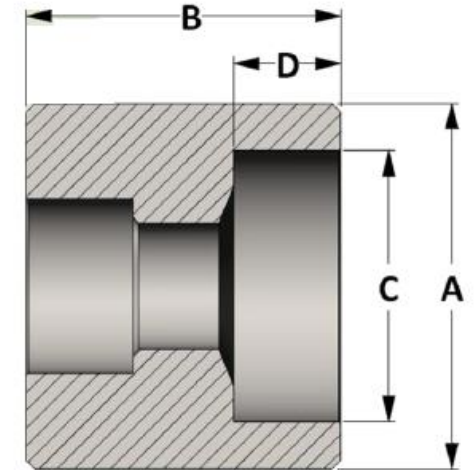
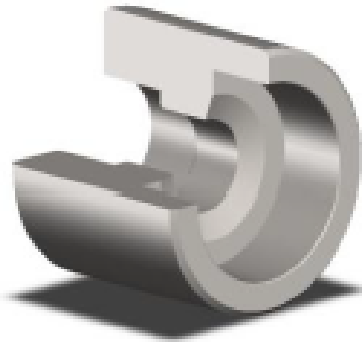
SIZE	L	SIZE	L
1/8	0.273	2	0.697
1/4	0.395	2-1/2	0.933
3/8	0.407	3	1.016
1/2	0.534	3-1/2	1.071
3/4	0.553	4	1.094
1	0.661	5	1.187
1-1/4	0.681	6	1.208
1-1/2	0.681	8	1.313

PIPE SIZE	CLASS 3000 – Figure No. 03009												
	1/8	1/4	3/8	1/2	3/4	1	1-1/4	1-1/2	2	2-1/2	3	3-1/2	4
A	0.625	0.750	0.875	1.125	1.375	1.750	2.250	2.500	3.000	3.625	4.250	4.750	5.500
B	0.625	0.688	0.750	0.938	1.000	1.188	1.313	1.563	1.688	1.813	2.125	2.250	2.375
LBS	0.04	0.05	0.11	0.15	0.21	0.41	0.79	1.09	1.53	2.38	3.33	4.02	6.16

PIPE SIZE	CLASS 6000 – Figure No. 06009												
	1/8	1/4	3/8	1/2	3/4	1	1-1/4	1-1/2	2	2-1/2	3	3-1/2	4
A	0.875	1.000	1.250	1.500	1.750	2.250	2.500	3.000	3.625	4.250	5.000	5.750	6.250
B	0.625	0.688	0.750	0.938	1.000	1.188	1.313	1.563	1.688	1.813	2.125	2.250	2.375
LBS	0.15	0.17	0.20	0.35	0.48	0.95	2.02	2.55	3.80	5.20	7.54	9.69	15.19

Clase de presión de sodada	Esesor de tubo
Class 3000	S160
Class 6000	XXH

# Socket Weld Reducer



PIPE SIZE	CLASS 3000 – Figure No. 13008												
	1/8	1/4	3/8	1/2	3/4	1	1-1/4	1-1/2	2	2-1/2	3	3-1/2	4
A	---	0.875	1.063	1.250	1.500	1.813	2.250	2.500	3.000	3.625	4.313	5.000	5.500
B	---	1.125	1.125	1.250	1.438	1.563	1.563	1.563	2.063	2.063	2.063	2.313	2.313
C	---	0.560	0.693	0.859	1.071	1.335	1.682	1.922	2.410	2.910	3.536	4.036	4.545
D	---	0.438	0.438	0.438	0.531	0.531	0.531	0.531	0.656	0.656	0.656	0.781	0.781
LBS	---	0.14	0.21	0.33	0.55	0.89	1.39	1.70	3.09	4.60	6.51	9.79	11.72

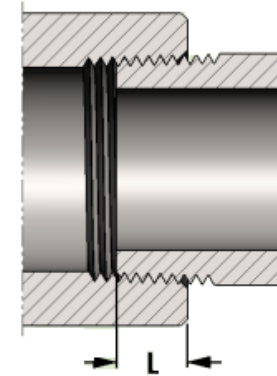
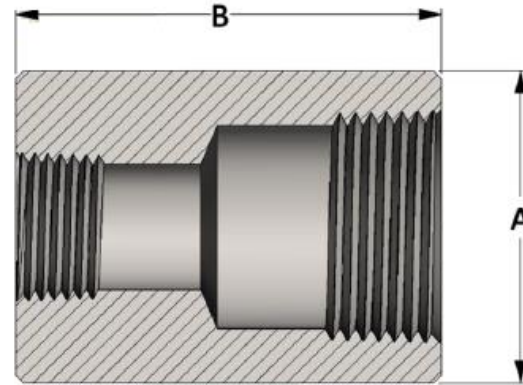
PIPE SIZE	CLASS 6000 – Figure No. 16008												
	1/8	1/4	3/8	1/2	3/4	1	1-1/4	1-1/2	2	2-1/2	3	3-1/2	4
A	---	1.000	1.250	1.500	1.750	2.000	2.500	2.750	3.625	4.250	5.000	6.000	6.000
B	---	1.125	1.125	1.250	1.438	1.563	1.563	1.563	2.063	2.063	2.063	2.313	2.313
C	---	0.560	0.693	0.859	1.071	1.335	1.682	1.922	2.410	2.910	3.536	4.036	4.545
D	---	0.438	0.438	0.438	0.531	0.531	0.531	0.531	0.656	0.656	0.656	0.781	0.781
LBS	---	0.20	0.32	0.53	0.82	1.15	1.81	2.16	5.13	6.99	9.57	15.58	14.82

PIPE SIZE	CLASS 9000 – Figure No. 19008												
	1/8	1/4	3/8	1/2	3/4	1	1-1/4	1-1/2	2	2-1/2	3	3-1/2	4
A	---	1.250	1.500	1.750	2.000	2.500	2.750	3.000	3.625	4.500	5.500	6.000	6.500
B	---	1.125	1.125	1.250	1.438	1.563	1.563	1.563	2.063	2.063	2.063	2.313	2.313
C	---	0.560	0.693	0.859	1.071	1.335	1.682	1.922	2.410	2.910	3.536	4.036	4.545
D	---	0.438	0.438	0.438	0.531	0.531	0.531	0.531	0.656	0.656	0.656	0.781	0.781
LBS	---	0.34	0.55	0.76	1.12	1.93	2.26	2.65	5.02	7.90	11.88	15.48	17.92

Clase de presión de sodada	Espesor de tubo
Class 3000	S80/XH
Class 6000	S160
Class 9000	XXH



# Threaded Reducer



SIZE	L	SIZE	L
1/8	0.273	2	0.697
1/4	0.395	2-1/2	0.933
3/8	0.407	3	1.016
1/2	0.534	3-1/2	1.071
3/4	0.553	4	1.094
1	0.661	5	1.187
1-1/4	0.681	6	1.208
1-1/2	0.681	8	1.313

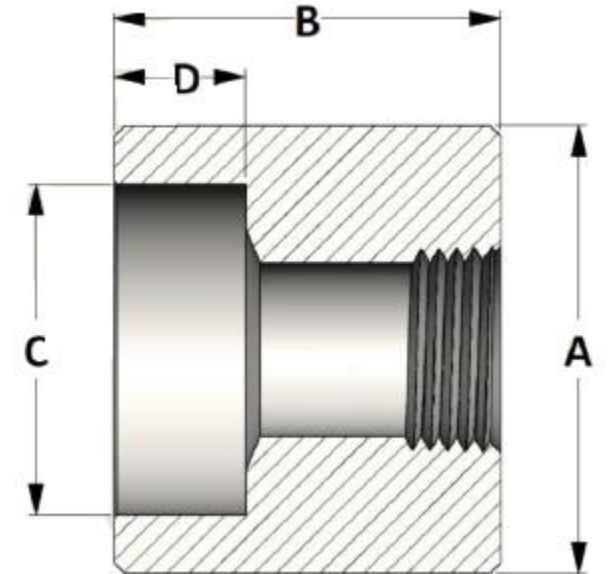
PIPE SIZE	CLASS 3000 – Figure No. 03008												
	1/8	1/4	3/8	1/2	3/4	1	1-1/4	1-1/2	2	2-1/2	3	3-1/2	4
A	---	0.750	0.875	1.125	1.375	1.750	2.250	2.500	3.000	3.625	4.250	4.750	5.500
B	---	1.375	1.500	1.875	2.000	2.375	2.625	3.125	3.375	3.625	4.250	4.500	4.750
LBS	---	0.12	0.18	0.39	0.61	1.22	2.20	3.22	4.69	7.62	11.44	14.91	21.85

PIPE SIZE	CLASS 6000 – Figure No. 06008												
	1/8	1/4	3/8	1/2	3/4	1	1-1/4	1-1/2	2	2-1/2	3	3-1/2	4
A	---	1.000	1.250	1.500	1.750	2.250	2.500	3.000	3.625	4.250	5.000	5.750	6.250
B	---	1.375	1.500	1.875	2.000	2.375	2.625	3.125	3.375	3.625	4.250	4.500	4.750
LBS	---	0.26	0.45	0.79	1.13	2.27	2.89	5.13	7.78	11.57	17.97	25.36	31.11

LONGITUD DE LA ROSCA ATORNILLADA AL CONECTOR

Clase de presión de rosca	Espesor de tubo
Class 3000	S160
Class 6000	XXH

# Socket Weld x Threaded Reducer

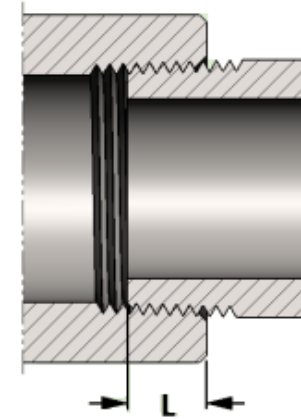
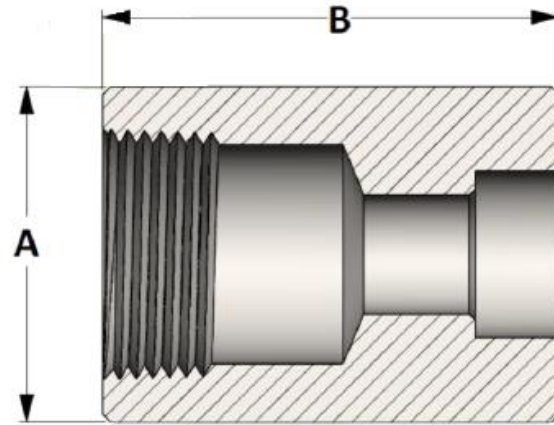


PIPE SIZE	CLASS 3000 – Figure No. 13061												
	1/8	1/4	3/8	1/2	3/4	1	1-1/4	1-1/2	2	2-1/2	3	3-1/2	4
A	---	0.875	1.063	1.250	1.500	1.813	2.250	2.500	3.000	3.625	4.313	5.000	5.500
B	---	1.125	1.125	1.250	1.438	1.563	1.563	1.563	2.063	2.063	2.063	2.313	2.313
C	---	0.560	0.693	0.859	1.071	1.335	1.682	1.922	2.410	2.910	3.536	4.036	4.545
D	---	0.438	0.438	0.438	0.531	0.531	0.531	0.531	0.656	0.656	0.656	0.781	0.781
LBS	---	0.14	0.21	0.33	0.55	0.89	1.39	1.70	3.09	4.60	6.51	9.79	11.72

PIPE SIZE	CLASS 6000 – Figure No. 16061												
	1/8	1/4	3/8	1/2	3/4	1	1-1/4	1-1/2	2	2-1/2	3	3-1/2	4
A	---	1.000	1.250	1.500	1.750	2.000	2.500	2.750	3.625	4.250	5.000	6.000	6.000
B	---	1.125	1.125	1.250	1.438	1.563	1.563	1.563	2.063	2.063	2.063	2.313	2.313
C	---	0.560	0.693	0.859	1.071	1.335	1.682	1.922	2.410	2.910	3.536	4.036	4.545
D	---	0.438	0.438	0.438	0.531	0.531	0.531	0.531	0.656	0.656	0.656	0.781	0.781
LBS	---	0.20	0.32	0.53	0.82	1.15	1.81	2.16	5.13	6.99	9.57	15.58	14.82

PIPE SIZE	CLASS 9000 – Figure No. 19061												
	1/8	1/4	3/8	1/2	3/4	1	1-1/4	1-1/2	2	2-1/2	3	3-1/2	4
A	---	1.250	1.500	1.750	2.000	2.500	2.750	3.000	3.625	4.500	5.500	6.000	6.500
B	---	1.125	1.125	1.250	1.438	1.563	1.563	1.563	2.063	2.063	2.063	2.313	2.313
C	---	0.560	0.693	0.859	1.071	1.335	1.682	1.922	2.410	2.910	3.536	4.036	4.545
D	---	0.438	0.438	0.438	0.531	0.531	0.531	0.531	0.656	0.656	0.656	0.781	0.781
LBS	---	0.34	0.55	0.76	1.12	1.93	2.26	2.65	5.02	7.90	11.88	15.48	17.92

# Threaded x Socket Weld Reducer



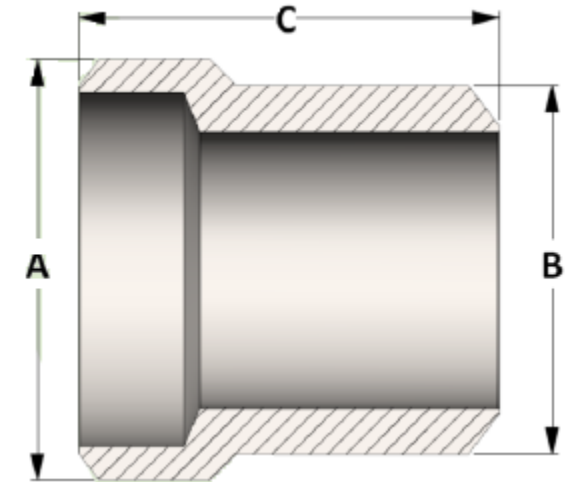
SIZE	L	SIZE	L
1/8	0.273	2	0.697
1/4	0.395	2-1/2	0.933
3/8	0.407	3	1.016
1/2	0.534	3-1/2	1.071
3/4	0.553	4	1.094
1	0.661	5	1.187
1-1/4	0.681	6	1.208
1-1/2	0.681	8	1.313

LONGITUD DE LA ROSCA A TORNILLADA AL CONECTOR

PIPE SIZE	CLASS 3000 – Figure No. 03060												
	1/8	1/4	3/8	1/2	3/4	1	1-1/4	1-1/2	2	2-1/2	3	3-1/2	4
A	---	0.750	0.875	1.125	1.375	1.750	2.250	2.500	3.000	3.625	4.250	4.750	5.500
B	---	1.375	1.500	1.875	2.000	2.375	2.625	3.125	3.375	3.625	4.250	4.500	4.750
LBS	---	0.12	0.18	0.39	0.61	1.22	2.20	3.22	4.69	7.62	11.44	14.91	21.85

PIPE SIZE	CLASS 6000 – Figure No. 06060												
	1/8	1/4	3/8	1/2	3/4	1	1-1/4	1-1/2	2	2-1/2	3	3-1/2	4
A	---	1.000	1.250	1.500	1.750	2.250	2.500	3.000	3.625	4.250	5.000	5.750	6.250
B	---	1.375	1.500	1.875	2.000	2.375	2.625	3.125	3.375	3.625	4.250	4.500	4.750
LBS	---	0.26	0.45	0.79	1.13	2.27	2.89	5.13	7.78	11.57	17.97	25.36	31.11

# Butt Weld Reducer

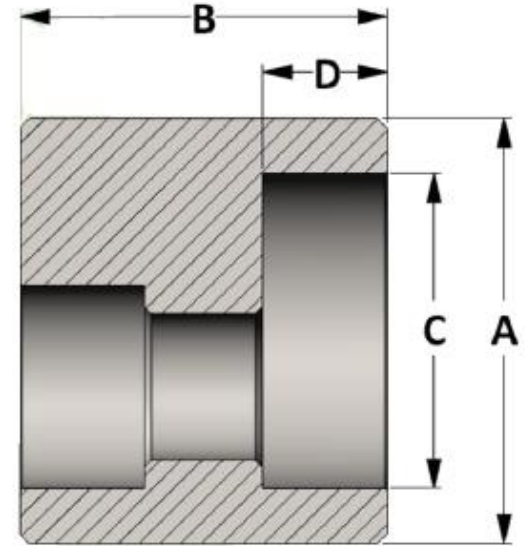


Pipe Size		Dimensions			Weights			
		A	B	C	STD	XH	S160	XXH
1/2	1/4	0.840	0.540	1.500	0.09	0.12	0.14	0.17
	3/8	0.840	0.675	1.500	0.09	0.13	0.15	0.19
3/4	1/4	1.050	0.540	1.500	0.13	0.18	0.21	0.25
	3/8	1.050	0.675	1.500	0.13	0.18	0.21	0.26
1	1/2	1.050	0.840	1.500	0.13	0.18	0.22	0.28
	1/4	1.315	0.540	2.000	0.23	0.31	0.37	0.48
1	3/8	1.315	0.675	2.000	0.23	0.31	0.37	0.49
	1/2	1.315	0.840	2.000	0.24	0.32	0.39	0.51
1	3/4	1.315	1.050	2.000	0.25	0.33	0.42	0.54
	1/4	1.660	0.540	2.000	0.35	0.48	0.54	0.66
1-1/4	3/8	1.660	0.675	2.000	0.34	0.47	0.54	0.67
	1/2	1.660	0.840	2.000	0.35	0.48	0.55	0.69
1-1/4	3/4	1.660	1.050	2.000	0.34	0.47	0.57	0.71
	1	1.660	1.315	2.000	0.36	0.48	0.60	0.78
1-1/2	3/8	1.900	0.675	2.500	0.50	0.68	0.79	1.04
	1/2	1.900	0.840	2.500	0.51	0.68	0.81	1.07
1-1/2	3/4	1.900	1.050	2.500	0.50	0.68	0.84	1.09
	1	1.900	1.315	2.500	0.52	0.70	0.88	1.16
1-1/2	1-1/4	1.900	1.660	2.500	0.54	0.72	0.92	1.25
	3/4	2.375	1.050	3.000	0.94	1.25	1.55	1.78
2	1	2.375	1.315	3.000	0.94	1.25	1.58	1.85
	1-1/4	2.375	1.660	3.000	0.91	1.23	1.57	1.94
2	1-1/2	2.375	1.900	3.000	0.90	1.22	1.63	2.02

Pipe Size		Dimensions			Weights			
		A	B	C	STD	XH	S160	XXH
2-1/2	3/4	2.875	1.050	3.500	1.55	2.00	2.32	2.97
	1	2.875	1.315	3.500	1.54	2.00	2.36	3.05
2-1/2	1-1/4	2.875	1.660	3.500	1.50	1.97	2.34	3.12
	1-1/2	2.875	1.900	3.500	1.47	1.95	2.41	3.18
2-1/2	2	2.875	2.375	3.500	1.44	1.95	2.64	3.36
	1	3.500	1.315	3.500	2.32	2.97	3.52	4.39
3	1-1/4	3.500	1.660	3.500	2.22	2.89	3.45	4.40
	1-1/2	3.500	1.900	3.500	2.15	2.83	3.47	4.41
3	2	3.500	2.375	3.500	2.03	2.73	3.58	4.48
	2-1/2	3.500	2.875	4.000	2.14	2.86	3.70	4.93
3-1/2	1-1/2	4.000	1.900	4.000	3.00	3.90	---	5.93
	2	4.000	2.375	4.000	2.83	3.77	---	6.01
3-1/2	2-1/2	4.000	2.875	4.000	2.93	3.91	---	6.52
	3	4.000	3.500	4.000	2.91	3.97	---	7.01
4	1-1/2	4.500	1.900	4.500	3.91	5.03	6.57	7.90
	2	4.500	2.375	4.500	3.67	4.82	6.56	7.83
4	2-1/2	4.500	2.875	4.500	3.66	4.85	6.48	8.15
	3	4.500	3.500	4.500	3.50	4.75	6.65	8.34
4	3-1/2	4.500	4.000	4.500	3.47	4.79	---	8.64
	3	6.625	3.500	5.500	9.83	12.28	17.34	20.52
6	3-1/2	6.625	4.000	5.500	8.96	11.97	---	20.53
	4	6.625	4.500	5.500	8.61	11.75	17.46	20.69
6	5	6.625	5.563	5.500	8.22	11.72	18.42	21.54



# Socket Weld Eccentric Reducer



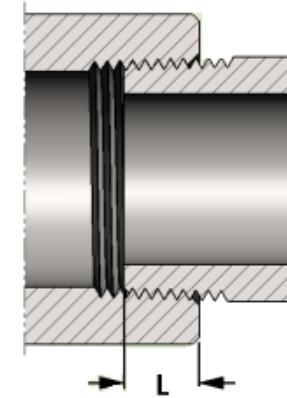
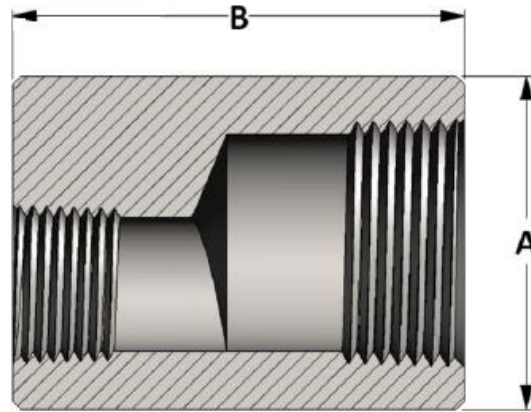
PIPE SIZE	CLASS 3000 – Figure No. 13024												
	1/8	1/4	3/8	1/2	3/4	1	1-1/4	1-1/2	2	2-1/2	3	3-1/2	4
A	---	0.875	1.063	1.250	1.500	1.813	2.250	2.500	3.000	3.625	4.313	5.000	5.500
B	---	1.125	1.125	1.250	1.438	1.563	1.563	1.563	2.063	2.063	2.063	2.313	2.313
C	---	0.560	0.693	0.859	1.071	1.335	1.682	1.922	2.410	2.910	3.536	4.036	4.545
D	---	0.438	0.438	0.438	0.531	0.531	0.531	0.531	0.656	0.656	0.656	0.781	0.781
LBS	---	0.14	0.21	0.33	0.55	0.89	1.39	1.70	3.09	4.60	6.51	9.79	11.72

PIPE SIZE	CLASS 6000 – Figure No. 16024												
	1/8	1/4	3/8	1/2	3/4	1	1-1/4	1-1/2	2	2-1/2	3	3-1/2	4
A	---	1.000	1.250	1.500	1.750	2.000	2.500	2.750	3.625	4.250	5.000	6.000	6.000
B	---	1.125	1.125	1.250	1.438	1.563	1.563	1.563	2.063	2.063	2.063	2.313	2.313
C	---	0.560	0.693	0.859	1.071	1.335	1.682	1.922	2.410	2.910	3.536	4.036	4.545
D	---	0.438	0.438	0.438	0.531	0.531	0.531	0.531	0.656	0.656	0.656	0.781	0.781
LBS	---	0.20	0.32	0.53	0.82	1.15	1.81	2.16	5.13	6.99	9.57	15.58	14.82

PIPE SIZE	CLASS 9000 – Figure No. 19024												
	1/8	1/4	3/8	1/2	3/4	1	1-1/4	1-1/2	2	2-1/2	3	3-1/2	4
A	---	1.250	1.500	1.750	2.000	2.500	2.750	3.000	3.625	4.500	5.500	6.000	6.500
B	---	1.125	1.125	1.250	1.438	1.563	1.563	1.563	2.063	2.063	2.063	2.313	2.313
C	---	0.560	0.693	0.859	1.071	1.335	1.682	1.922	2.410	2.910	3.536	4.036	4.545
D	---	0.438	0.438	0.438	0.531	0.531	0.531	0.531	0.656	0.656	0.656	0.781	0.781
LBS	---	0.34	0.55	0.76	1.12	1.93	2.26	2.65	5.02	7.90	11.88	15.48	17.92

Clase de presión de sodada	Espesor de tubo
Class 3000	S80/XH
Class 6000	S160
Class 9000	XXH

# Threaded Eccentric Reducer



SIZE	L	SIZE	L
1/8	0.273	2	0.697
1/4	0.395	2-1/2	0.933
3/8	0.407	3	1.016
1/2	0.534	3-1/2	1.071
3/4	0.553	4	1.094
1	0.661	5	1.187
1-1/4	0.681	6	1.208
1-1/2	0.681	8	1.313

LONGITUD DE LA ROSCA ATORNILLADA AL CONECTOR

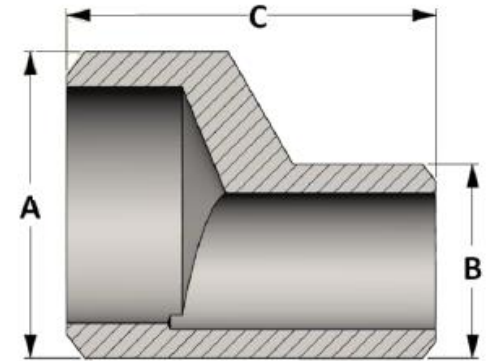
PIPE SIZE	CLASS 3000 – Figure No. 03024												
	1/8	1/4	3/8	1/2	3/4	1	1-1/4	1-1/2	2	2-1/2	3	3-1/2	4
A	---	0.750	0.875	1.125	1.375	1.750	2.250	2.500	3.000	3.625	4.250	4.750	5.500
B	---	1.375	1.500	1.875	2.000	2.375	2.625	3.125	3.375	3.625	4.250	4.500	4.750
LBS	---	0.12	0.18	0.39	0.61	1.22	2.20	3.22	4.69	7.62	11.44	14.91	21.85

PIPE SIZE	CLASS 6000 – Figure No. 06024												
	1/8	1/4	3/8	1/2	3/4	1	1-1/4	1-1/2	2	2-1/2	3	3-1/2	4
A	---	1.000	1.250	1.500	1.750	2.250	2.500	3.000	3.625	4.250	5.000	5.750	6.250
B	---	1.375	1.500	1.875	2.000	2.375	2.625	3.125	3.375	3.625	4.250	4.500	4.750
LBS	---	0.26	0.45	0.79	1.13	2.27	2.89	5.13	7.78	11.57	17.97	25.36	31.11

Clase de presión de rosca	Espesor de tubo
Class 3000	S160
Class 6000	XXH



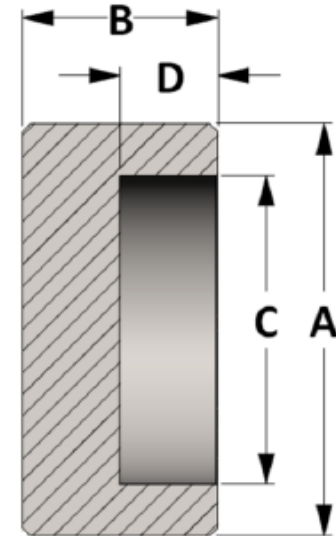
# Butt Weld Eccentric Reducer



Pipe Size		Dimensions			Weights			
		A	B	C	STD	XH	S160	XXH
1/2	1/4	0.840	0.540	1.500	0.09	0.10	0.15	---
	3/8	0.840	0.675	1.500	0.09	0.09	0.15	0.18
3/4	1/4	1.050	0.540	1.500	0.15	0.15	0.20	---
	3/8	1.050	0.675	1.500	0.14	0.14	0.21	0.25
1	1/2	1.050	0.840	1.500	0.14	0.14	0.22	0.28
	3/4	1.315	0.540	2.000	0.30	0.27	0.37	---
1	3/8	1.315	0.675	2.000	0.28	0.27	0.37	0.48
	1/2	1.315	0.840	2.000	0.27	0.27	0.38	0.50
1	3/4	1.315	1.050	2.000	0.26	0.26	0.41	0.54
	1	1.660	0.540	2.000	0.40	0.45	0.57	---
1-1/4	3/8	1.660	0.675	2.000	0.39	0.43	0.56	0.70
	1/2	1.660	0.840	2.000	0.37	0.42	0.56	0.71
1-1/4	3/4	1.660	1.050	2.000	0.36	0.39	0.57	0.73
	1	1.660	1.315	2.000	0.36	0.39	0.60	0.78
1-1/2	3/8	1.900	0.675	2.500	0.65	0.65	0.88	---
	1/2	1.900	0.840	2.500	0.63	0.64	0.87	1.14
1-1/2	3/4	1.900	1.050	2.500	0.60	0.60	0.88	1.14
	1	1.900	1.315	2.500	0.58	0.59	0.91	1.19
1-1/2	1-1/4	1.900	1.660	2.500	0.56	0.56	0.92	1.26
	3/4	2.375	1.050	3.000	1.05	1.05	1.68	2.03
2	1	2.375	1.315	3.000	1.01	1.01	1.66	2.05
	1-1/4	2.375	1.660	3.000	0.95	0.95	1.61	2.07
2	1-1/2	2.375	1.900	3.000	0.92	0.92	1.66	2.10

Pipe Size		Dimensions			Weights			
		A	B	C	STD	XH	S160	XXH
2-1/2	3/4	2.875	1.050	3.500	1.79	2.00	2.59	3.25
	1	2.875	1.315	3.500	1.73	1.91	2.59	3.27
	1-1/4	2.875	1.660	3.500	1.61	1.76	2.47	3.26
	1-1/2	2.875	1.900	3.500	1.54	1.68	2.50	3.28
3	2	2.875	2.375	3.500	1.46	1.53	2.68	3.40
	1	3.500	1.315	3.500	2.74	3.03	4.15	4.85
	1-1/4	3.500	1.660	3.500	2.52	2.79	3.93	4.74
	1-1/2	3.500	1.900	3.500	2.39	2.63	3.86	4.68
3-1/2	2	3.500	2.375	3.500	2.15	2.33	3.83	4.61
	2-1/2	3.500	2.875	4.000	2.18	2.30	3.82	5.00
	1-1/2	4.000	1.900	4.000	3.44	3.79	---	6.45
	2	4.000	2.375	4.000	3.11	3.39	---	6.33
4	2-1/2	4.000	2.875	4.000	3.07	3.29	---	6.23
	3	4.000	3.500	4.000	2.95	3.06	---	7.09
	1-1/2	4.500	1.900	4.500	4.68	4.68	7.02	8.11
	2	4.500	2.375	4.500	4.18	4.18	6.80	7.85
4	2-1/2	4.500	2.875	4.500	3.98	3.98	6.57	8.10
	3	4.500	3.500	4.500	3.63	3.63	6.64	8.24
	3-1/2	4.500	4.000	4.500	3.51	3.51	---	8.57
	3	6.625	3.500	5.500	12.76	12.76	20.28	22.18
6	3-1/2	6.625	4.000	5.500	11.68	11.67	---	21.71
	4	6.625	4.500	5.500	10.72	10.72	19.48	21.48
	5	6.625	5.563	5.500	9.18	9.18	19.76	21.75

# Socket Weld Cap

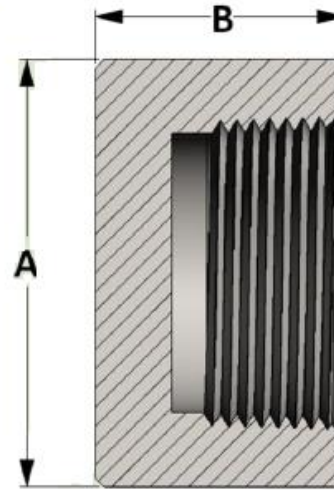


PIPE SIZE	CLASS 3000 – Figure No. 13010												
	1/8	1/4	3/8	1/2	3/4	1	1-1/4	1-1/2	2	2-1/2	3	3-1/2	4
A	0.750	0.875	1.063	1.250	1.500	1.813	2.250	2.500	3.000	3.625	4.313	5.000	5.500
B	0.688	0.688	0.688	0.813	0.938	1.063	1.063	1.125	1.313	1.438	1.625	1.875	1.875
C	0.426	0.560	0.693	0.859	1.071	1.335	1.682	1.922	2.410	2.910	3.536	4.036	4.545
D	0.438	0.438	0.438	0.438	0.531	0.531	0.531	0.531	0.656	0.656	0.656	0.781	0.781
LBS	0.05	0.09	0.13	0.34	0.35	0.52	1.01	1.13	2.03	2.79	4.43	7.54	7.86

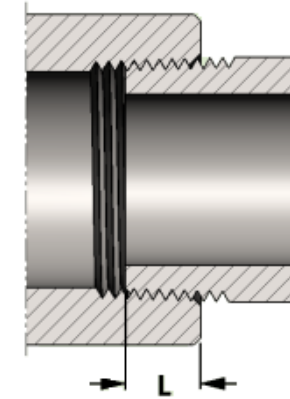
PIPE SIZE	CLASS 6000 – Figure No. 16010												
	1/8	1/4	3/8	1/2	3/4	1	1-1/4	1-1/2	2	2-1/2	3	3-1/2	4
A	0.875	1.000	1.250	1.500	1.750	2.000	2.500	2.750	3.625	4.250	5.000	6.000	6.000
B	0.750	0.750	0.813	0.813	1.000	1.125	1.125	1.188	1.500	1.563	1.688	1.813	2.000
C	0.426	0.560	0.693	0.859	1.071	1.335	1.682	1.922	2.410	2.910	3.536	4.036	4.545
D	0.438	0.438	0.438	0.438	0.531	0.531	0.531	0.531	0.656	0.656	0.656	0.781	0.781
LBS	0.13	0.17	0.27	0.43	0.58	0.80	1.08	1.60	3.69	5.10	7.71	11.62	12.36

PIPE SIZE	CLASS 9000 – Figure No. 19010												
	1/8	1/4	3/8	1/2	3/4	1	1-1/4	1-1/2	2	2-1/2	3	3-1/2	4
A	1.000	1.250	1.750	1.750	2.000	2.500	2.750	3.000	3.625	4.500	5.500	6.000	6.500
B	0.813	0.875	0.938	1.063	1.188	1.250	1.250	1.375	1.563	1.750	2.000	2.125	2.125
C	0.426	0.560	0.693	0.859	1.071	1.335	1.682	1.922	2.410	2.910	3.536	4.036	4.545
D	0.438	0.438	0.438	0.438	0.531	0.531	0.531	0.531	0.656	0.656	0.656	0.781	0.781
LBS	0.16	0.27	0.40	0.74	0.90	1.55	1.80	2.35	3.85	10.96	11.57	14.11	16.30

Clase de presión de soldada	Espesor de tubo
Class 3000	S80/XH
Class 6000	S160
Class 9000	XXH



# Threaded Cap



SIZE	L	SIZE	L
1/8	0.273	2	0.697
1/4	0.395	2-1/2	0.933
3/8	0.407	3	1.016
1/2	0.534	3-1/2	1.071
3/4	0.553	4	1.094
1	0.661	5	1.187
1-1/4	0.681	6	1.208
1-1/2	0.681	8	1.313

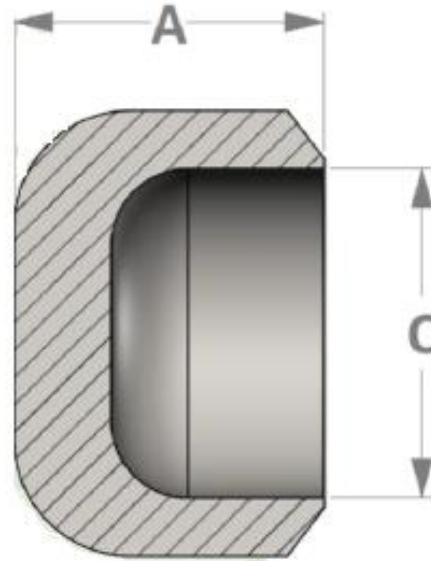
PIPE SIZE	CLASS 3000 – Figure No. 03010												
	1/8	1/4	3/8	1/2	3/4	1	1-1/4	1-1/2	2	2-1/2	3	3-1/2	4
A	0.625	0.750	0.875	1.125	1.375	1.750	2.250	2.500	3.000	3.625	4.250	4.750	5.500
B	0.750	1.000	1.000	1.250	1.438	1.625	1.750	1.750	1.875	2.375	2.563	2.625	2.687
LBS	0.50	0.08	0.11	0.23	0.38	0.70	1.28	1.58	2.25	4.22	6.38	7.09	11.13

LONGITUD DE LA ROSCA ATORNILLADA AL CONECTOR

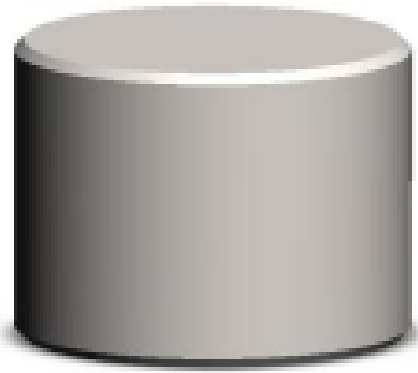
PIPE SIZE	CLASS 6000 – Figure No. 06010												
	1/8	1/4	3/8	1/2	3/4	1	1-1/4	1-1/2	2	2-1/2	3	3-1/2	4
A	0.875	1.000	1.250	1.500	1.750	2.250	2.500	3.000	3.625	4.250	5.000	5.750	6.250
B	0.875	1.062	1.062	1.312	1.500	1.688	1.813	1.875	2.000	2.500	2.688	2.875	2.938
LBS	0.13	0.19	0.34	0.55	0.78	1.62	1.91	3.07	4.53	7.37	11.32	13.50	23.01

Clase de presión de rosca	Espesor de tubo
Class 3000	S160
Class 6000	XXH

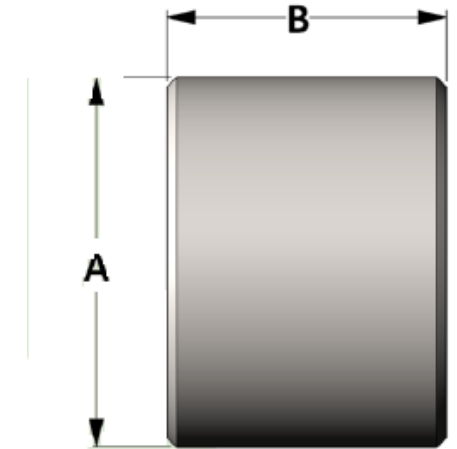
# Butt Weld Cap



PIPE SIZE	STD/S40 – Figure No. 45010			XH/S80 – Figure No. 48010			S160 – Figure No. 52010			XXH – Figure No. 53010		
	A	C	LBS	A	C	LBS	A	C	LBS	A	C	LBS
1/2	1.000	0.622	0.09	1.000	0.546	0.11	1.000	0.464	0.13	1.000	0.252	0.16
3/4	1.000	0.824	0.11	1.000	0.742	0.16	1.000	0.612	0.19	1.000	0.434	0.23
1	1.500	1.049	0.30	1.500	0.957	0.35	1.500	0.815	0.43	1.500	0.599	0.54
1-1/4	1.500	1.380	0.37	1.500	1.278	0.47	1.500	1.160	0.58	1.500	0.896	0.76
1-1/2	1.500	1.610	0.48	1.500	1.500	0.63	1.500	1.338	0.78	1.500	1.100	0.97
2	1.500	2.067	0.63	1.500	1.939	0.83	1.750	1.689	1.37	1.750	1.503	1.55
2-1/2	1.500	2.469	1.11	1.500	2.323	1.34	2.000	2.125	2.17	2.000	1.771	2.77
3	2.000	3.068	1.79	2.000	2.900	2.33	3.000	2.624	4.45	3.000	2.300	5.51
4	2.500	4.026	3.23	2.500	3.826	4.38	3.000	3.438	7.22	3.000	3.152	8.72



# Socket Weld Plug



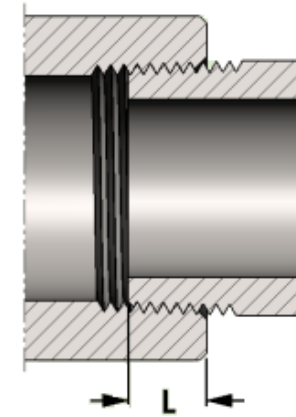
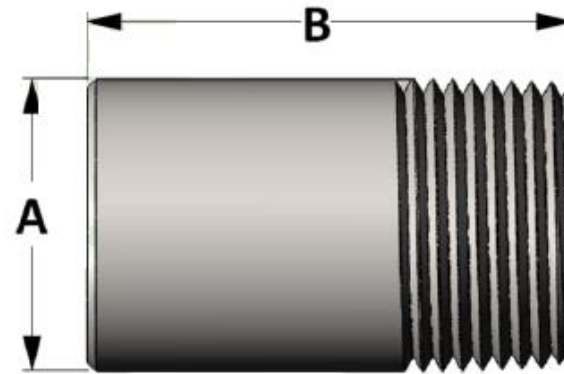
PIPE SIZE	CLASS 3000 – Figure No. 13021												
	1/8	1/4	3/8	1/2	3/4	1	1-1/4	1-1/2	2	2-1/2	3	3-1/2	4
A	0.405	0.540	0.675	0.840	1.05	1.315	1.660	1.900	2.375	2.875	3.500	4.000	4.500
B	1.125	1.125	1.125	1.125	1.125	1.125	1.250	1.313	1.500	2.125	2.125	2.500	3.000
LBS	0.04	0.07	0.11	0.18	0.27	0.43	0.76	1.04	1.87	3.89	5.76	3.46	13.44

PIPE SIZE	CLASS 6000 – Figure No. 16021												
	1/8	1/4	3/8	1/2	3/4	1	1-1/4	1-1/2	2	2-1/2	3	3-1/2	4
A	0.405	0.540	0.675	0.840	1.05	1.315	1.660	1.900	2.375	2.875	3.500	4.000	4.500
B	1.125	1.125	1.125	1.250	1.313	1.313	1.375	1.563	1.625	2.250	2.250	2.625	3.250
LBS	0.04	0.07	0.11	0.20	0.32	0.50	0.84	1.25	2.03	4.12	6.10	9.30	14.57

PIPE SIZE	CLASS 9000 – Figure No. 19021												
	1/8	1/4	3/8	1/2	3/4	1	1-1/4	1-1/2	2	2-1/2	3	3-1/2	4
A	0.405	0.540	0.675	0.840	1.05	1.315	1.660	1.900	2.375	2.875	3.500	4.000	4.500
B	1.250	1.250	1.250	1.250	1.375	1.500	1.750	1.875	2.000	2.625	2.625	3.000	3.625
LBS	0.04	0.08	0.13	0.20	0.34	0.57	1.07	1.50	2.50	4.870	7.10	10.62	16.24

Clase de presión de soldada	Espesor de tubo
Class 3000	S80 /XH
Class 6000	S160
Class 9000	XXH

# Round Head Plug

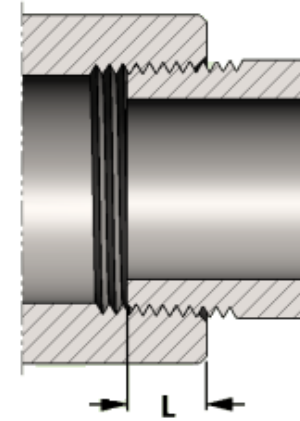
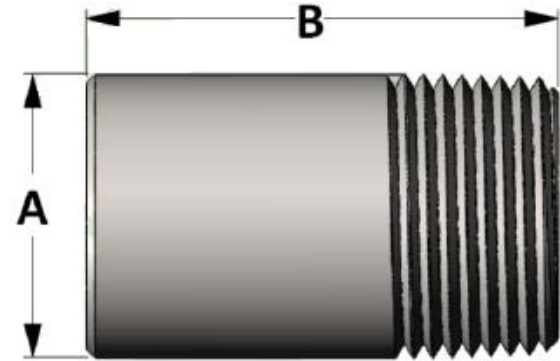


SIZE	L	SIZE	L
1/8	0.273	2	0.697
1/4	0.395	2-1/2	0.933
3/8	0.407	3	1.016
1/2	0.534	3-1/2	1.071
3/4	0.553	4	1.094
1	0.661	5	1.187
1-1/4	0.681	6	1.208
1-1/2	0.681	8	1.313

LONGITUD DE LA ROSCA ATORNILLADA AL CONECTOR

		Figure No. 06015														
PIPE SIZE		1/8	1/4	3/8	1/2	3/4	1	1-1/4	1-1/2	2	2-1/2	3	3-1/2	4	5	6
A		0.405	0.540	0.675	0.840	1.050	1.312	1.660	1.900	2.375	2.875	3.500	4.000	4.500	5.563	6.625
B		1.380	1.625	1.625	1.750	1.750	2.000	2.000	2.000	2.500	2.750	2.750	3.000	3.000	5.500	5.500
LBS		0.05	0.10	0.16	0.25	0.40	0.72	1.17	1.64	3.04	5.13	7.19	10.34	13.25	37.67	53.43

# Bulg Plug

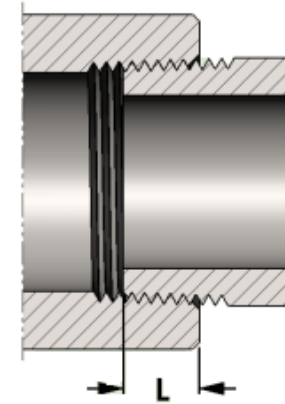
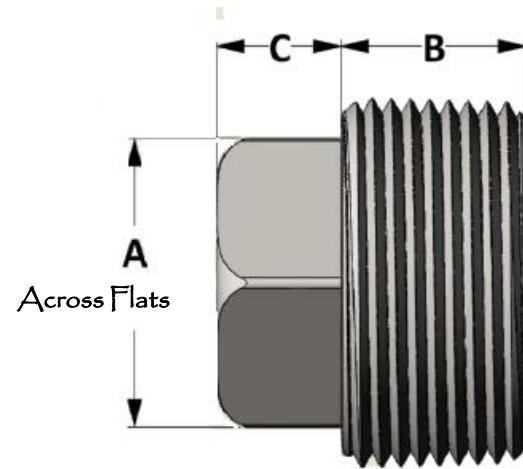


SIZE	L	SIZE	L
1/8	0.273	2	0.697
1/4	0.395	2-1/2	0.933
3/8	0.407	3	1.016
1/2	0.534	3-1/2	1.071
3/4	0.553	4	1.094
1	0.661	5	1.187
1-1/4	0.681	6	1.208
1-1/2	0.681	8	1.313

LONGITUD DE LA ROSCA A TORNILLADA AL CONECTOR

PIPE SIZE	Figure No. 06192														
	1/8	1/4	3/8	1/2	3/4	1	1-1/4	1-1/2	2	2-1/2	3	3-1/2	4	5	6
A	0.405	0.540	0.675	0.840	1.050	1.312	1.660	1.900	2.375	2.875	3.500	4.000	4.500	5.563	6.625
B	2.000	2.000	2.250	2.500	2.750	3.000	3.250	3.500	4.000	5.000	6.000	6.500	7.000	8.500	10.000
LBS	0.07	0.13	0.23	0.39	0.68	1.15	1.99	2.82	5.03	9.22	16.39	23.20	31.62	58.67	97.89

# Square Head Plug



LONGITUD DE LA ROSCA ATORNILLADA AL CONECTOR

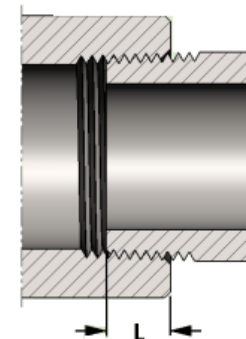
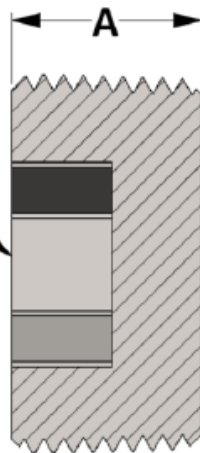
SIZE	L	SIZE	L
1/8	0.273	2	0.697
1/4	0.395	2-1/2	0.933
3/8	0.407	3	1.016
1/2	0.534	3-1/2	1.071
3/4	0.553	4	1.094
1	0.661	5	1.187
1-1/4	0.681	6	1.208
1-1/2	0.681	8	1.313

PIPE SIZE	Figure No. 06013														
	1/8	1/4	3/8	1/2	3/4	1	1-1/4	1-1/2	2	2-1/2	3	3-1/2	4	5	6
A	0.281	0.380	0.440	0.563	0.625	0.813	0.940	1.125	1.313	1.500	1.690	1.875	2.500	3.250	4.250
B	0.380	0.440	0.500	0.563	0.625	0.750	0.813	0.813	0.880	1.063	1.125	1.187	1.250	1.875	2.000
C	0.250	0.250	0.313	0.380	0.440	0.500	0.563	0.625	0.690	0.750	0.813	0.875	1.000	1.625	1.875
LBS	0.02	0.03	0.06	0.11	0.18	0.35	0.60	0.82	1.36	2.21	3.47	4.73	8.64	17.12	28.41

# Countersunk Head Plug



Countersunk available as Hexagon or Square

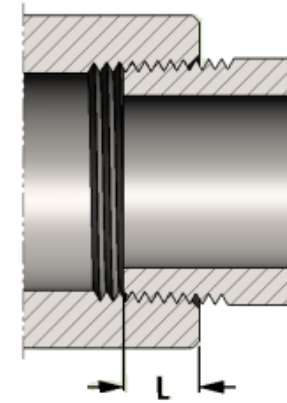
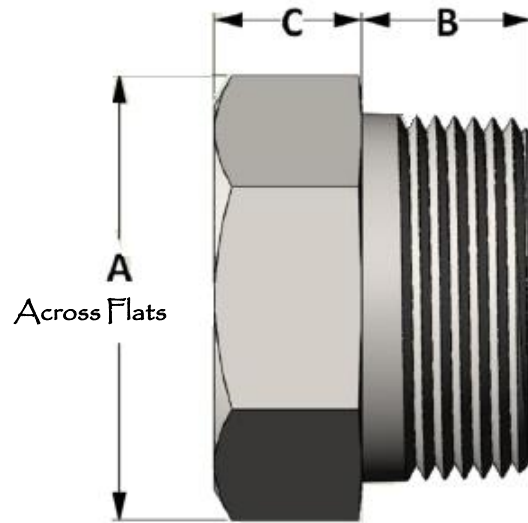


SIZE	L	SIZE	L
1/8	0.273	2	0.697
1/4	0.395	2-1/2	0.933
3/8	0.407	3	1.016
1/2	0.534	3-1/2	1.071
3/4	0.553	4	1.094
1	0.661	5	1.187
1-1/4	0.681	6	1.208
1-1/2	0.681	8	1.313

LONGITUD DE LA ROSCA A TORNILLADA AL CONECTOR

PIPE SIZE	Figure No. 06019 for Square Countersunk • Figure No. 06020 for Hexagon Countersunk													
	1/8	1/4	3/8	1/2	3/4	1	1-1/4	1-1/2	2	2-1/2	3	3-1/2	4	6
A	0.375	0.440	0.500	0.562	0.630	0.750	0.812	0.830	0.880	1.070	1.130	1.187	1.250	1.500
LBS	0.01	0.02	0.03	0.06	0.10	0.48	0.38	0.46	0.84	1.63	2.40	4.11	5.07	13.81

# Hexagon Head Plug

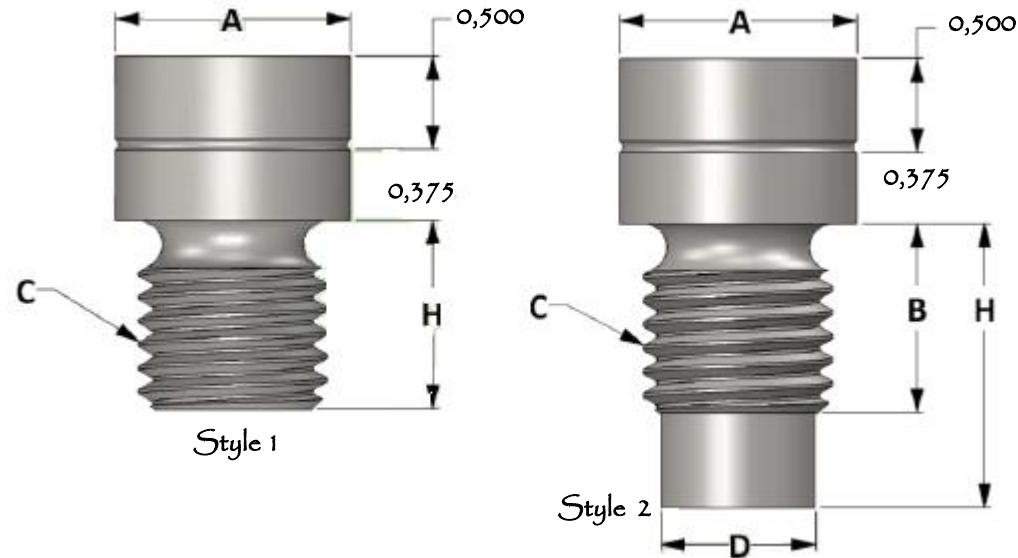


SIZE	L	SIZE	L
1/8	0.273	2	0.697
1/4	0.395	2-1/2	0.933
3/8	0.407	3	1.016
1/2	0.534	3-1/2	1.071
3/4	0.553	4	1.094
1	0.661	5	1.187
1-1/4	0.681	6	1.208
1-1/2	0.681	8	1.313

LONGITUD DE LA ROSCA ATORNILLADA AL CONECTOR

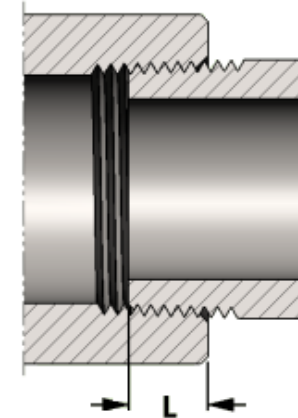
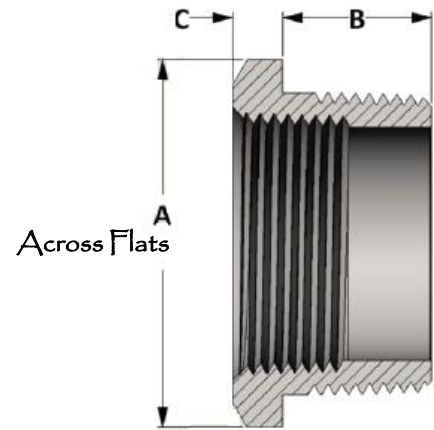
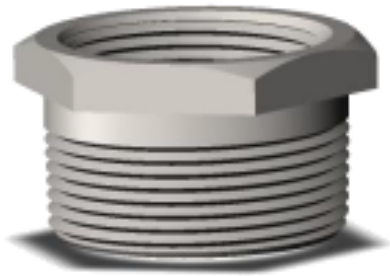
PIPE SIZE	Figure No. 06014															
	1/8	1/4	3/8	1/2	3/4	1	1-1/4	1-1/2	2	2-1/2	3	3-1/2	4	5	6	
A	0.437	0.625	0.688	0.875	1.062	1.375	1.750	2.000	2.500	3.000	3.625	4.250	4.750	5.750	6.750	
B	0.438	0.500	0.563	0.688	0.750	0.875	0.875	0.938	1.000	1.188	1.375	1.500	1.500	1.500	1.750	
C	0.250	0.250	0.313	0.313	0.380	0.380	0.563	0.625	0.690	0.750	0.813	1.000	1.000	0.750	0.750	
LBS	0.30	0.05	0.09	0.16	0.27	0.48	0.95	1.32	2.23	3.81	4.75	8.28	12.22	15.61	24.87	

# Radiographic plug and Boss



PIPE WALL THICKNESS	RADIOGRAPHIC PLUG – Figure No. 06186					
	< 5/8" without boss	< 5/8" with boss	5/8" ≥ 1-3/8"	1-3/8" ≥ 3"	3" ≥ 5"	> 5"
STYLE	1	2	1	2	2	2
A	1.250	1.250	1.250	1.250	1.750	2.250
B	---	1.000	---	1.250	1.500	2.000
C	1" – 8 UNC – 3A	1" – 8 UNC – 3A	1" – 8 UNC – 3A	1" – 8 UNC – 3A	1-1/2" – 6 UNC – 3A	2" – 4-1/2" UNC – 3A
D	---	0.812	---	0.812	1.234	1.656
H	0.625	Specified by user				

# Hexagon Head Bushing



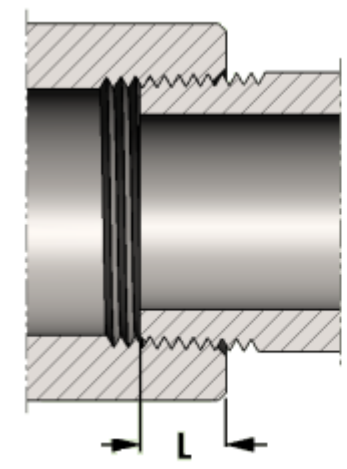
SIZE	L	SIZE	L
1/8	0.273	2	0.697
1/4	0.395	2-1/2	0.933
3/8	0.407	3	1.016
1/2	0.534	3-1/2	1.071
3/4	0.553	4	1.094
1	0.661	5	1.187
1-1/4	0.681	6	1.208
1-1/2	0.681	8	1.313

LONGITUD DE LA ROSCA A TORNILLADA AL CONECTOR

PIPE SIZE	Figure No. 06011														
	1/8	1/4	3/8	1/2	3/4	1	1-1/4	1-1/2	2	2-1/2	3	3-1/2	4	5	6
A	---	0.625	0.688	0.875	1.063	1.375	1.750	2.000	2.500	3.000	3.625	4.250	4.750	5.750	6.750
B	---	0.500	0.563	0.688	0.750	0.875	0.875	0.938	1.000	1.188	1.375	1.500	1.500	1.500	1.513
C	---	0.125	0.160	0.190	0.220	0.250	0.281	0.313	0.344	0.500	0.500	0.625	0.625	0.750	0.750
LBS	---	0.02	0.04	0.06	0.11	0.19	0.39	0.63	0.79	1.19	2.56	5.50	7.06	9.32	13.15



# Flush Bushing

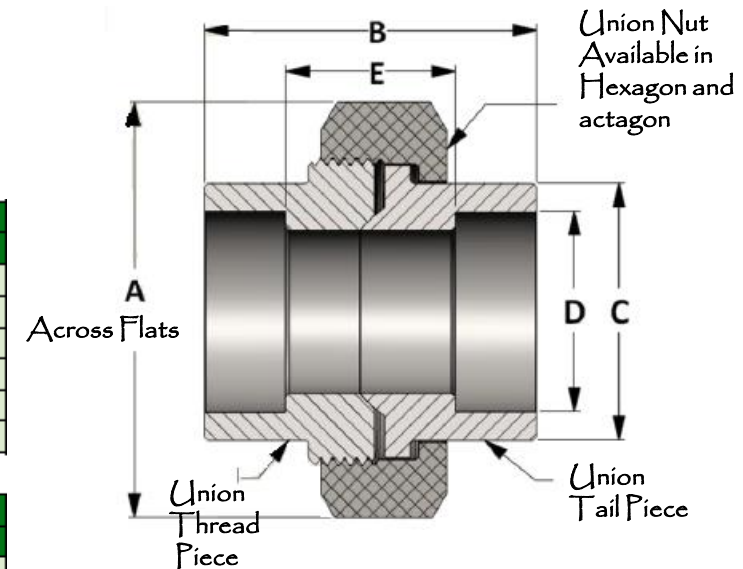
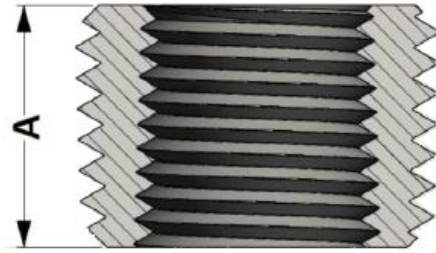
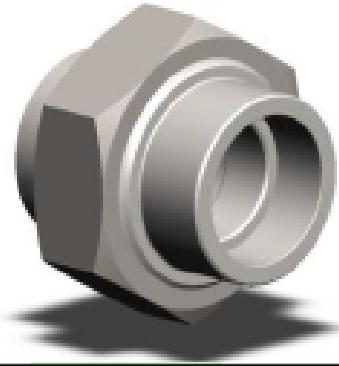


SIZE	L	SIZE	L
1/8	0.273	2	0.697
1/4	0.395	2-1/2	0.933
3/8	0.407	3	1.016
1/2	0.534	3-1/2	1.071
3/4	0.553	4	1.094
1	0.661	5	1.187
1-1/4	0.681	6	1.208
1-1/2	0.681	8	1.313

LONGITUD DE LA ROSCA A TORNILLADA AL CONECTOR

PIPE SIZE	Figure No. 06012														
	1/8	1/4	3/8	1/2	3/4	1	1-1/4	1-1/2	2	2-1/2	3	3-1/2	4	5	6
A	---	0.438	0.500	0.563	0.625	0.750	0.813	0.813	0.875	1.063	1.125	1.188	1.250	1.250	1.375
LBS	---	0.01	0.02	0.03	0.05	0.09	0.17	0.31	0.37	0.52	0.90	0.92	2.125	2.41	4.60

# Socket Weld Union



CLASS 3000 - FIGURE NO. 13017

PIPE SIZE	1/8	1/4	3/8	1/2	3/4	1	1-1/4	1-1/2	2	2-1/2	3	4
A	1.375	1.375	1.625	1.813	2.250	2.562	3.063	3.438	4.063	4.875	5.688	6.875
B	1.688	1.688	1.813	1.938	2.250	2.438	2.813	3.000	3.375	4.031	4.313	8.000
C	0.865	0.865	1.025	1.235	1.465	1.795	2.165	2.425	2.965	3.615	4.305	5.415
D	0.426	0.560	0.693	0.859	1.071	1.335	1.682	1.922	2.410	2.910	3.536	4.545
E	0.813	0.813	0.938	0.938	1.125	1.188	1.438	1.500	1.625	2.250	2.313	5.000
LBS	0.40	0.38	0.52	0.73	1.19	1.66	2.66	3.42	5.36	9.12	12.58	17.50

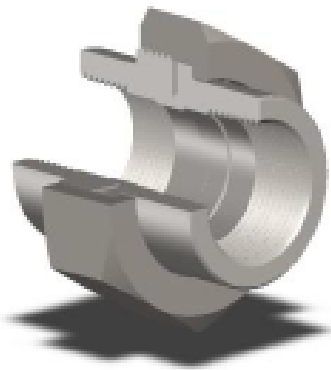
CLASS 6000 - FIGURE NO. 16017

PIPE SIZE	1/8	1/4	3/8	1/2	3/4	1	1-1/4	1-1/2	2	2-1/2	3	4
A	1.375	1.625	1.813	2.250	2.562	3.063	3.438	4.063	4.875	5.688	6.875	---
B	1.688	1.813	1.938	2.250	2.438	2.813	3.000	3.375	4.031	4.313	8.000	---
C	0.865	1.025	1.235	1.465	1.795	2.165	2.425	2.965	3.615	4.305	5.415	---
D	0.426	0.560	0.693	0.859	1.071	1.335	1.682	1.922	2.410	2.910	3.536	---
E	0.813	0.813	0.938	0.938	1.125	1.188	1.438	1.500	1.625	2.250	5.750	---
LBS	0.48	0.56	0.75	1.35	2.01	3.17	3.92	6.60	10.12	14.00	40.891	---

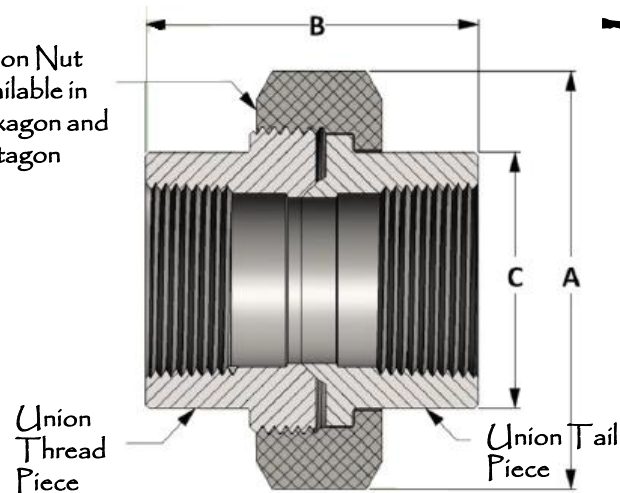
CLASS 9000 - FIGURE NO. 19017

PIPE SIZE	1/8	1/4	3/8	1/2	3/4	1	1-1/4	1-1/2	2	2-1/2	3	4
A	1.750	2.000	2.250	2.563	3.063	3.688	4.313	5.000	5.750	6.875	---	---
B	2.500	2.563	2.938	3.250	3.750	4.000	4.625	4.813	5.563	6.25	---	---
C	1.000	1.250	1.500	1.750	2.250	2.500	3.000	3.625	4.250	5.000	---	---
D	0.426	0.560	0.693	0.859	1.071	1.335	1.682	1.922	2.410	2.910	---	---
E	1.720	1.688	1.938	2.000	2.375	2.375	3.000	2.938	3.188	3.750	---	---
LBS	0.89	1.045	1.955	3.29	5.34	7.99	12.73	18.34	26.36	37.07	---	---

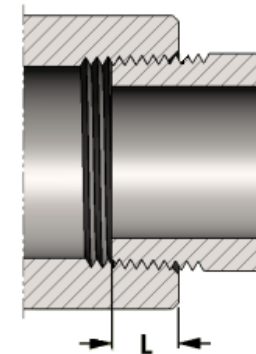
Clase de presión de soldada	Espesor de tubo
Class 3000	S80/XH
Class 6000	S160
Class 9000	XXH



Union Nut  
Available in  
Hexagon and  
Octagon



# Threaded Union



SIZE	L	SIZE	L
1/8	0.273	2	0.697
1/4	0.395	2-1/2	0.933
3/8	0.407	3	1.016
1/2	0.534	3-1/2	1.071
3/4	0.553	4	1.094
1	0.661	5	1.187
1-1/4	0.681	6	1.208
1-1/2	0.681	8	1.313

LONGITUD DE LA ROSCA A TORNILLADA AL CONECTOR

Clase de presión de rosca	Espesor de tubo
Class 2000	S80/XH
Class 3000	S160
Class 6000	XXH

PIPE SIZE	CLASS 3000 – Figure No. 03017												
	1/8	1/4	3/8	1/2	3/4	1	1-1/4	1-1/2	2	2-1/2	3	3-1/2	4
A	1.375	1.375	1.625	1.813	2.25	2.563	3.063	3.438	4.063	4.875	5.688	6.875	6.875
B	1.625	1.625	1.750	2.000	2.313	2.500	2.813	3.000	3.438	4.000	4.375	8.000	8.000
C	0.865	0.865	1.025	1.235	1.465	1.795	2.165	2.425	2.965	3.615	4.305	5.415	5.415
LBS	0.45	0.40	0.65	0.77	1.19	1.73	2.74	3.60	5.51	8.90	12.61	36.92	17.50

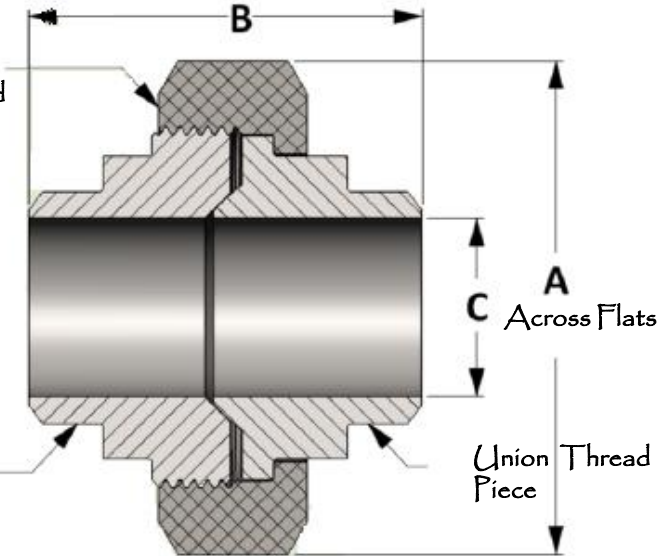
PIPE SIZE	CLASS 6000 – Figure No. 06017												
	1/8	1/4	3/8	1/2	3/4	1	1-1/4	1-1/2	2	2-1/2	3	3-1/2	4
A	1.375	1.625	1.813	2.25	2.563	3.063	3.438	4.063	4.875	5.688	6.875	---	---
B	1.625	1.750	2.000	2.313	2.500	2.813	3.000	3.438	4.000	4.375	8.000	---	---
C	0.865	1.025	1.235	1.465	1.795	2.165	2.425	2.965	3.615	4.305	5.415	---	---
LBS	0.48	0.56	0.75	1.35	2.01	3.17	3.92	6.60	10.12	14.00	41.16	---	---

PIPE SIZE	CLASS 9000 – Figure No. 09017												
	1/8	1/4	3/8	1/2	3/4	1	1-1/4	1-1/2	2	2-1/2	3	3-1/2	4
A	1.625	1.813	2.25	2.563	3.063	3.438	4.063	4.875	5.688	6.875	---	---	---
B	2.500	2.563	3.000	3.156	3.625	4.000	4.500	4.875	6.000	6.313	---	---	---
C	1.000	1.250	1.500	1.750	2.250	2.500	3.000	3.625	4.250	5.000	---	---	---
LBS	1.18	1.67	1.95	3.12	5.61	8.08	13.23	18.34	28.21	45.86	---	---	---

# Butt Weld Union



Union Nut  
 Available in  
 Hexagon and  
 Octagon

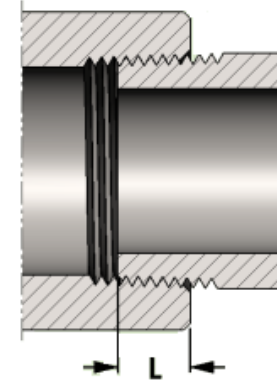
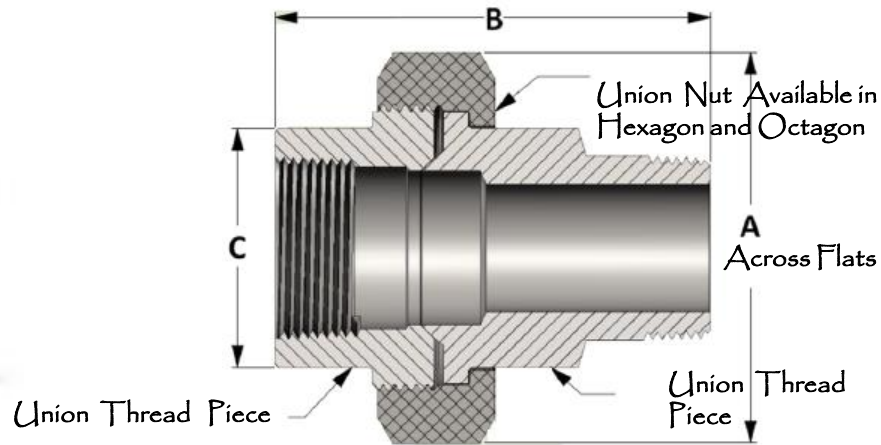


Union Thread Piece

Union Thread Piece

PIPE SIZE	A	B	STD/S40		XH/S80		S160		XXH	
			C	LBS	C	LBS	C	LBS	C	LBS
1/8	1.375	1.688	0.269	0.37	0.215	0.38	0.157	0.39	0.025	0.39
1/4	1.375	1.688	0.364	0.38	0.302	0.38	0.250	0.39	0.064	0.40
3/8	1.625	1.813	0.493	0.55	0.423	0.58	0.359	0.60	0.171	0.62
1/2	1.812	1.938	0.622	0.72	0.546	0.75	0.464	0.78	0.252	0.83
3/4	2.250	2.250	0.824	1.25	0.742	1.31	0.612	1.39	0.434	1.45
1	2.562	2.438	1.049	1.70	0.957	1.79	0.815	1.91	0.599	2.02
1-1/4	3.062	2.813	1.380	2.61	1.278	2.76	1.160	2.91	0.896	3.16
1-1/2	3.437	3.000	1.610	3.37	1.500	3.57	1.338	3.83	1.100	4.12
2	4.062	3.375	2.067	5.07	1.939	5.43	1.689	6.01	1.503	6.34
2-1/2	4.875	4.031	2.469	8.65	2.323	9.21	2.125	9.86	1.771	10.74
3	5.687	4.313	3.068	11.82	2.900	12.70	2.624	13.93	2.300	15.05
4	6.875	8.000	4.026	29.20	3.826	31.84	3.438	36.40	3.152	39.22

# Male x Female Threaded Union



SIZE	L	SIZE	L
1/8	0.273	2	0.697
1/4	0.395	2-1/2	0.933
3/8	0.407	3	1.016
1/2	0.534	3-1/2	1.071
3/4	0.553	4	1.094
1	0.661	5	1.187
1-1/4	0.681	6	1.208
1-1/2	0.681	8	1.313

LONGITUD DE LA ROSCA ATORNILLADA AL CONECTOR

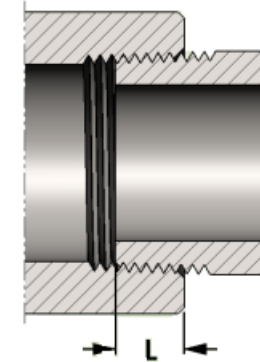
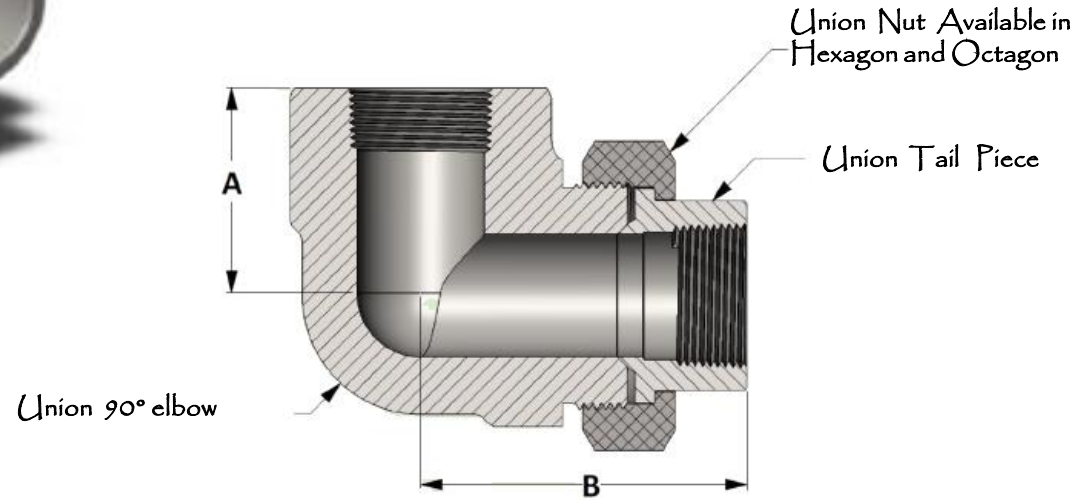
PIPE SIZE	CLASS 3000 – Figure No. 03032												
	1/8	1/4	3/8	1/2	3/4	1	1-1/4	1-1/2	2	2-1/2	3	3-1/2	4
A	1.375	1.375	1.625	1.813	2.25	2.563	3.063	3.438	4.063	4.875	5.688	6.875	6.875
B	2.500	2.500	2.719	3.000	3.438	3.750	4.125	4.313	4.875	5.375	5.813	9.406	9.406
C	0.865	0.865	1.025	1.235	1.465	1.795	2.165	2.425	2.965	3.615	4.305	5.415	5.415
LBS	0.41	0.45	0.61	0.88	1.47	2.11	3.10	4.19	6.78	10.81	15.02	30.54	34.19

PIPE SIZE	CLASS 6000 – Figure No. 06032												
	1/8	1/4	3/8	1/2	3/4	1	1-1/4	1-1/2	2	2-1/2	3	3-1/2	4
A	1.375	1.625	1.813	2.25	2.563	3.063	3.438	4.063	4.875	5.688	6.875	---	---
B	2.500	2.719	3.000	3.438	3.750	4.125	4.313	4.875	5.375	5.813	9.406	---	---
C	0.865	1.025	1.235	1.465	1.795	2.165	2.425	2.965	3.615	4.305	5.415	---	---
LBS	0.44	0.71	1.02	1.60	2.45	3.70	4.77	7.99	15.44	19.63	46.96	---	---

PIPE SIZE	CLASS 9000 – Figure No. 09032												
	1/8	1/4	3/8	1/2	3/4	1	1-1/4	1-1/2	2	2-1/2	3	3-1/2	4
A	1.625	1.813	2.25	2.563	3.063	3.438	4.063	4.875	5.688	6.875	---	---	---
B	2.719	3.000	3.438	3.750	4.125	4.313	4.875	5.375	5.813	9.406	---	---	---
C	1.000	1.250	1.500	1.750	2.250	2.500	3.000	3.625	4.250	5.000	---	---	---
LBS	0.83	1.23	1.77	2.90	4.72	6.36	10.60	16.25	23.99	46.78	---	---	---

Clase de presión de rosca	Espesor de tubo
Class 2000	S80/XH
Class 3000	S160
Class 6000	XXH

# Threaded Union 90° Elbow

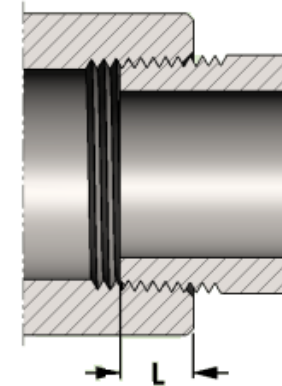
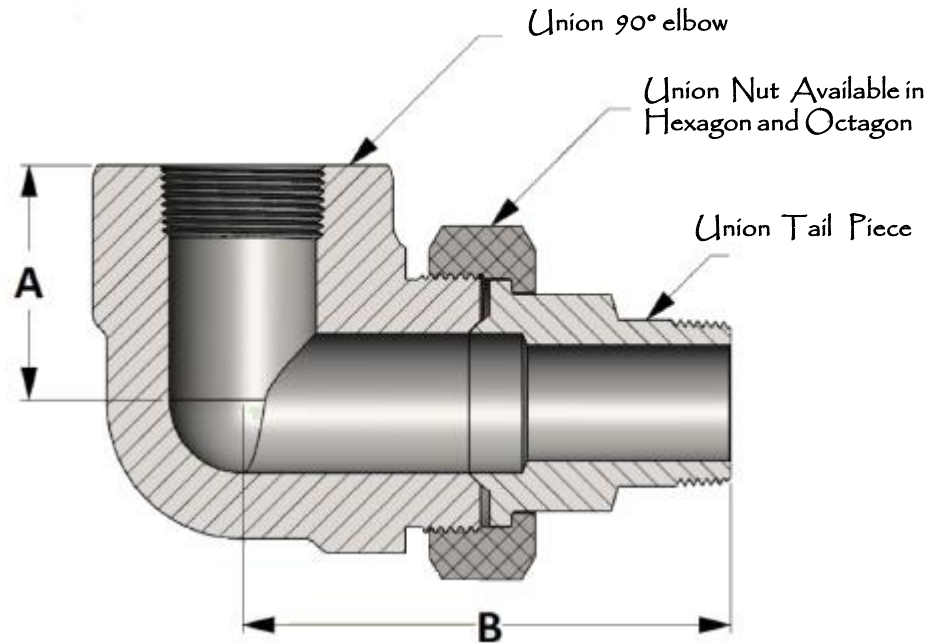


SIZE	L	SIZE	L
1/8	0.273	2	0.697
1/4	0.395	2-1/2	0.933
3/8	0.407	3	1.016
1/2	0.534	3-1/2	1.071
3/4	0.553	4	1.094
1	0.661	5	1.187
1-1/4	0.681	6	1.208
1-1/2	0.681	8	1.313

LONGITUD DE LA ROSCA ATORNILLADA AL CONECTOR

PIPE SIZE	Class 3000 - Figure No. 03341										
	1/8	1/4	3/8	1/2	3/4	1	1-1/4	1-1/2	2	2-1/2	3
A	1.125	1.125	1.125	1.313	1.500	1.750	2.375	2.375	3.000	3.750	4.188
B	1.938	1.938	2.031	2.281	2.563	2.969	3.813	3.813	4.750	5.866	6.406
LBS	0.96	0.94	0.98	1.30	1.90	3.00	3.88	6.63	8.13	22.50	27.20

# Male x Female Union 90° Elbow

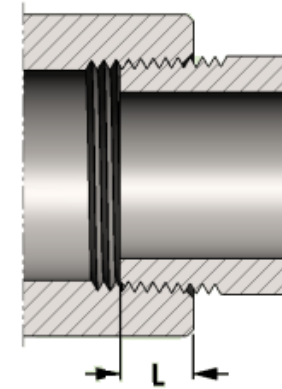
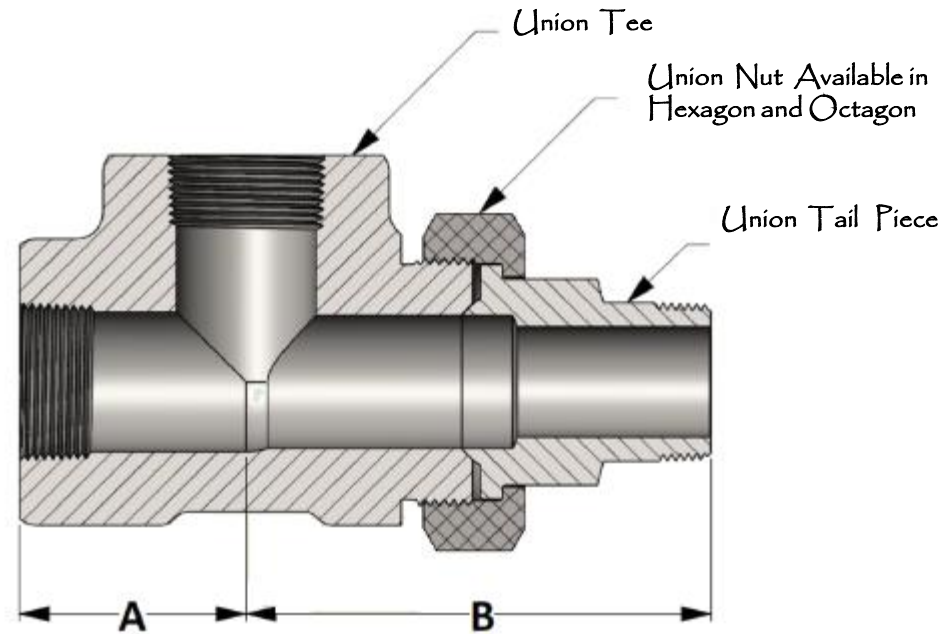


SIZE	L	SIZE	L
1/8	0.273	2	0.697
1/4	0.395	2-1/2	0.933
3/8	0.407	3	1.016
1/2	0.534	3-1/2	1.071
3/4	0.553	4	1.094
1	0.661	5	1.187
1-1/4	0.681	6	1.208
1-1/2	0.681	8	1.313

LONGITUD DE LA ROSCA A TORNILLADA AL CONECTOR

Class 3000 - Figure No. 03058											
PIPE SIZE	1/8	1/4	3/8	1/2	3/4	1	1-1/4	1-1/2	2	2-1/2	3
A	1.125	1.125	1.125	1.313	1.500	1.750	2.375	2.375	3.000	3.750	4.188
B	2.625	2.625	2.875	3.218	3.563	4.093	4.875	4.968	6.000	6.688	7.843
LBS	0.96	0.94	0.98	1.30	1.90	3.00	3.88	6.63	8.13	22.50	27.20

# Male x Female Union Tee



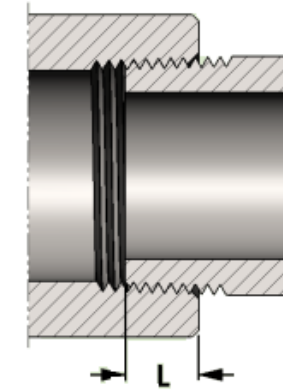
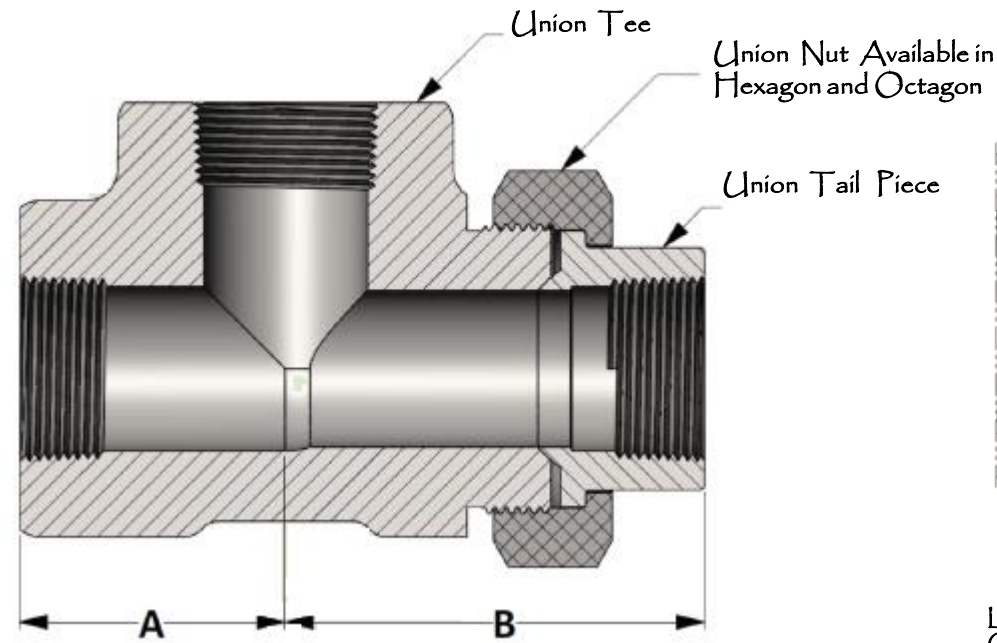
SIZE	L	SIZE	L
1/8	0.273	2	0.697
1/4	0.395	2-1/2	0.933
3/8	0.407	3	1.016
1/2	0.534	3-1/2	1.071
3/4	0.553	4	1.094
1	0.661	5	1.187
1-1/4	0.681	6	1.208
1-1/2	0.681	8	1.313

LONGITUD DE LA ROSCA ATORNILLADA AL CONECTOR

PIPE SIZE	Class 3000 - Figure No. 03078										
	1/8	1/4	3/8	1/2	3/4	1	1-1/4	1-1/2	2	2-1/2	3
A	1.125	1.125	1.125	1.313	1.500	1.750	2.375	2.375	3.000	3.750	4.188
B	2.625	2.625	2.875	3.218	3.563	4.093	4.875	4.969	6.000	6.688	7.843
LBS	1.15	1.13	1.18	1.56	2.28	3.60	4.66	7.90	9.20	27.30	32.30



# Threaded Union Tee

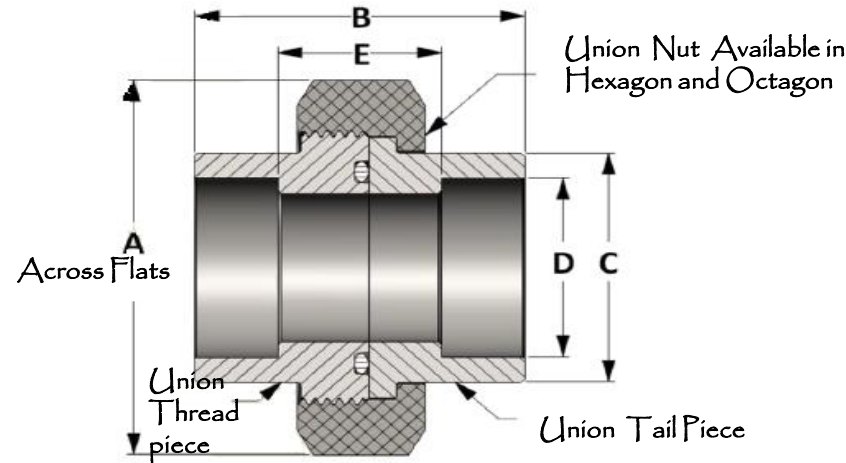


SIZE	L	SIZE	L
1/8	0.273	2	0.697
1/4	0.395	2-1/2	0.933
3/8	0.407	3	1.016
1/2	0.534	3-1/2	1.071
3/4	0.553	4	1.094
1	0.661	5	1.187
1-1/4	0.681	6	1.208
1-1/2	0.681	8	1.313

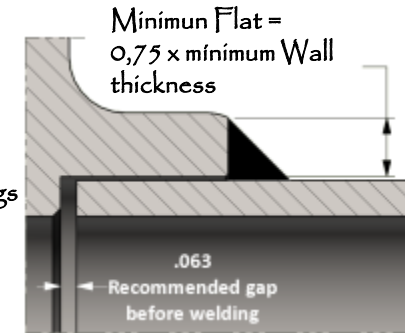
LONGITUD DE LA ROSCA ATORNILLADA AL CONECTOR

PIPE SIZE	Class 3000 - Figure No. 03078										
	1/8	1/4	3/8	1/2	3/4	1	1-1/4	1-1/2	2	2-1/2	3
A	1.125	1.125	1.125	1.313	1.500	1.750	2.375	2.375	3.000	3.750	4.188
B	1.938	1.938	2.031	2.281	2.563	2.969	3.813	3.813	4.750	5.866	6.406
LBS	1.15	1.13	1.18	1.56	2.28	3.60	4.66	7.90	9.20	27.30	32.30

# Socket Weld O-Ring Union



Welding Gap and Minimum Flat Dimension For Socket Weld Fittings



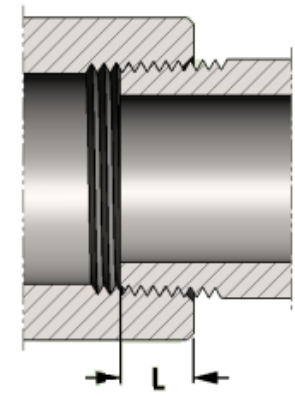
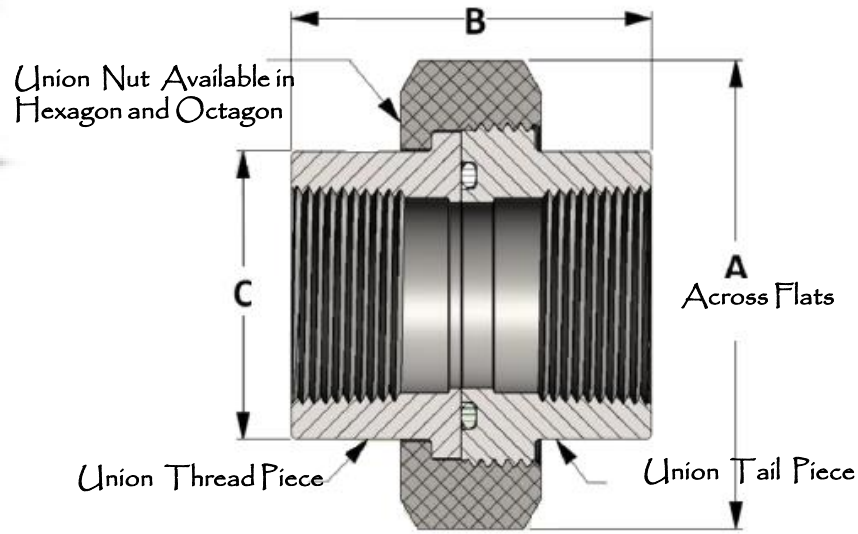
CLASS 3000 – FIGURE NO. 13035											
PIPE SIZE	1/8	1/4	3/8	1/2	3/4	1	1-1/4	1-1/2	2	2-1/2	3
A	1.375	1.375	1.625	1.813	2.250	2.562	3.063	3.438	4.063	4.875	5.688
B	1.625	1.625	1.781	1.906	2.218	2.406	2.718	2.968	3.343	3.906	4.218
C	0.865	0.865	1.025	1.235	1.465	1.795	2.165	2.425	2.965	3.615	4.305
D	0.426	0.560	0.693	0.859	1.071	1.335	1.682	1.922	2.410	2.910	3.536
E	0.813	0.813	0.906	0.906	1.094	1.156	1.344	1.468	1.593	2.156	2.218
LBS	0.40	0.38	0.52	0.73	1.19	1.66	2.66	3.42	5.36	9.12	12.58

CLASS 6000 – FIGURE NO. 16035											
PIPE SIZE	1/8	1/4	3/8	1/2	3/4	1	1-1/4	1-1/2	2	2-1/2	3
A	1.375	1.625	1.813	2.250	2.562	3.063	3.438	4.063	4.875	5.688	---
B	1.625	1.781	1.906	2.218	2.406	2.718	2.968	3.343	3.906	4.218	---
C	0.865	1.025	1.235	1.465	1.795	2.165	2.425	2.965	3.615	4.305	---
D	0.426	0.560	0.693	0.859	1.071	1.335	1.682	1.922	2.410	2.910	---
E	0.813	0.906	0.906	1.094	1.156	1.344	1.468	1.593	2.156	2.218	---
LBS	0.48	0.56	0.75	1.35	2.01	3.17	3.92	6.60	10.12	14.00	---

Clase de presión de soldadura	Espesor de tubo
Class 3000	S80/XH
Class 6000	S160



# Threaded O-Ring Union



SIZE	L	SIZE	L
1/8	0.273	2	0.697
1/4	0.395	2-1/2	0.933
3/8	0.407	3	1.016
1/2	0.534	3-1/2	1.071
3/4	0.553	4	1.094
1	0.661	5	1.187
1-1/4	0.681	6	1.208
1-1/2	0.681	8	1.313

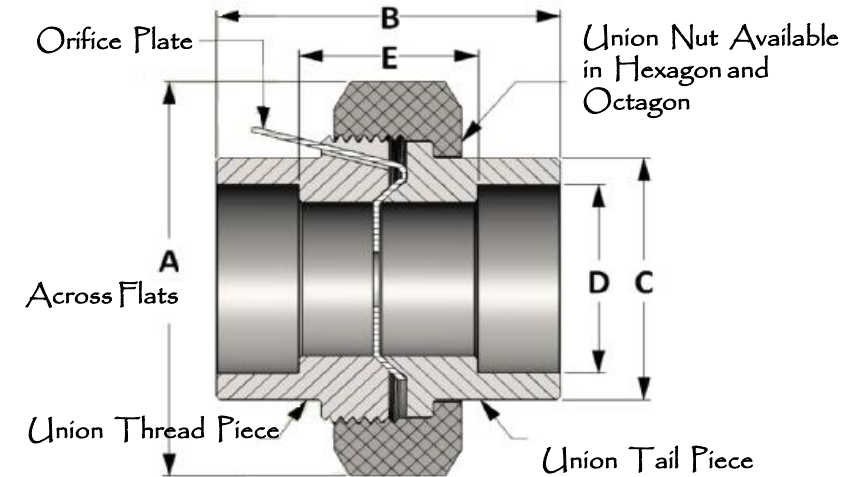
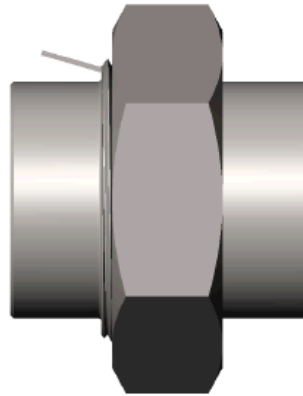
LONGITUD DE LA ROSCA ATORNILLADA AL CONECTOR

CLASS 3000 – Figure No. 03035											
PIPE SIZE	1/8	1/4	3/8	1/2	3/4	1	1-1/4	1-1/2	2	2-1/2	3
A	1.375	1.375	1.625	1.813	2.25	2.563	3.063	3.438	4.063	4.875	5.688
B	1.625	1.625	1.781	1.906	2.218	2.406	2.718	2.968	3.343	3.906	4.218
C	0.865	0.865	1.025	1.235	1.465	1.795	2.165	2.425	2.965	3.615	4.305
LBS	0.45	0.40	0.65	0.77	1.19	1.73	2.74	3.60	5.51	8.90	12.61

CLASS 6000 – Figure No. 06035											
PIPE SIZE	1/8	1/4	3/8	1/2	3/4	1	1-1/4	1-1/2	2	2-1/2	3
A	1.375	1.625	1.813	2.25	2.563	3.063	3.438	4.063	4.875	5.688	---
B	1.625	1.781	1.906	2.218	2.406	2.718	2.968	3.343	3.906	4.218	---
C	0.865	1.025	1.235	1.465	1.795	2.165	2.425	2.965	3.615	4.305	---
LBS	0.48	0.56	0.75	1.35	2.01	3.17	3.92	6.60	10.12	14.00	---

Clase de presión de rosca	Espesor de tubo
Class 3000	S160
Class 6000	XXH

# Socket Weld Orifice Union



CLASS 3000 - FIGURE NO. 13030

PIPE SIZE	1/8	1/4	3/8	1/2	3/4	1	1-1/4	1-1/2	2	2-1/2	3
A	1.375	1.375	1.625	1.813	2.250	2.562	3.063	3.438	4.063	4.875	5.688
B	1.725	1.725	1.881	2.006	2.318	2.506	2.818	3.068	3.443	4.006	4.318
C	0.865	0.865	1.025	1.235	1.465	1.795	2.165	2.425	2.965	3.615	4.305
D	0.426	0.560	0.693	0.859	1.071	1.335	1.682	1.922	2.410	2.910	3.536
E	0.813	0.813	0.906	0.906	1.094	1.156	1.344	1.468	1.593	2.156	2.218
LBS	0.40	0.38	0.52	0.73	1.19	1.66	2.66	3.42	5.36	9.12	12.58

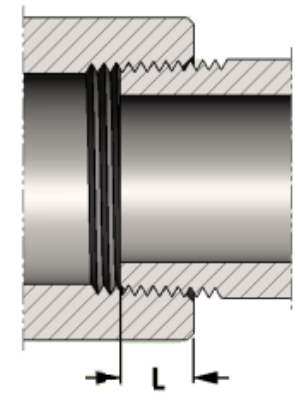
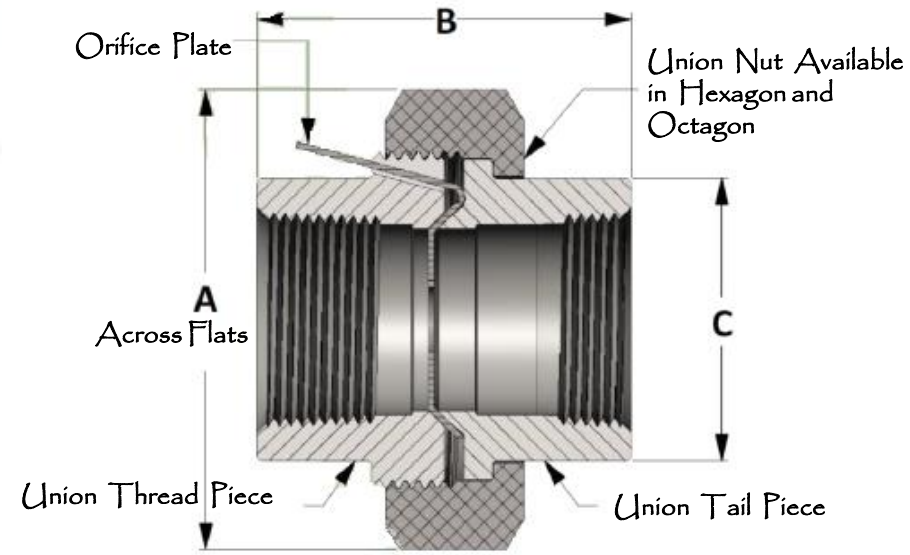
CLASS 6000 - FIGURE NO. 16030

PIPE SIZE	1/8	1/4	3/8	1/2	3/4	1	1-1/4	1-1/2	2	2-1/2	3
A	1.375	1.625	1.813	2.250	2.562	3.063	3.438	4.063	4.875	5.688	---
B	1.725	1.881	2.006	2.318	2.506	2.818	3.068	3.443	4.006	4.318	---
C	0.865	1.025	1.235	1.465	1.795	2.165	2.425	2.965	3.615	4.305	---
D	0.426	0.560	0.693	0.859	1.071	1.335	1.682	1.922	2.410	2.910	---
E	0.813	0.906	0.906	1.094	1.156	1.344	1.468	1.593	2.156	2.218	---
LBS	0.48	0.56	0.75	1.35	2.01	3.17	3.92	6.60	10.12	14.00	---

Clase de presión de Soldadura	Espesor de tubo
Class 3000	S80
Class 6000	S160



# Threaded Orifice Union



SIZE	L	SIZE	L
1/8	0.273	2	0.697
1/4	0.395	2-1/2	0.933
3/8	0.407	3	1.016
1/2	0.534	3-1/2	1.071
3/4	0.553	4	1.094
1	0.661	5	1.187
1-1/4	0.681	6	1.208
1-1/2	0.681	8	1.313

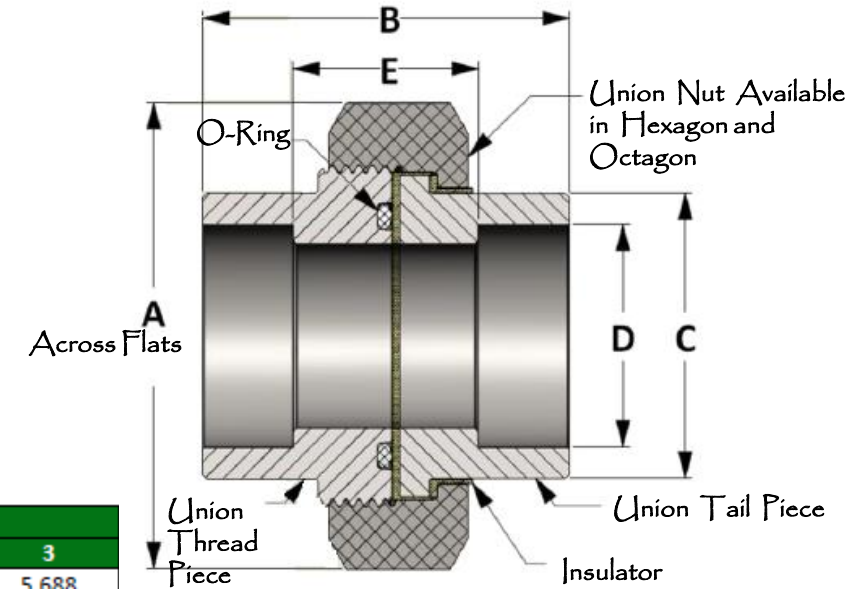
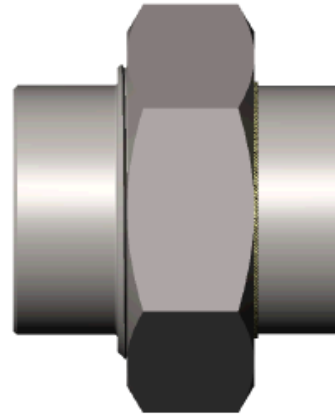
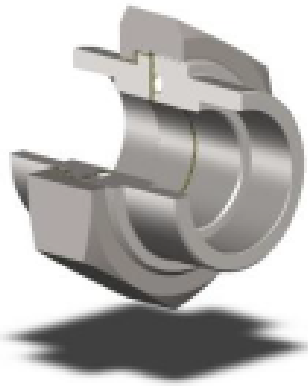
LONGITUD DE LA ROSCA A TORNILLADA AL CONECTOR

PIPE SIZE	CLASS 3000 - Figure No. 03030												
	1/8	1/4	3/8	1/2	3/4	1	1-1/4	1-1/2	2	2-1/2	3	3-1/2	4
A	1.375	1.375	1.625	1.813	2.25	2.563	3.063	3.438	4.063	4.875	5.688	6.875	6.875
B	1.625	1.625	1.750	2.000	2.313	2.500	2.813	3.000	3.438	4.000	4.375	8.000	8.000
C	0.865	0.865	1.025	1.235	1.465	1.795	2.165	2.425	2.965	3.615	4.305	5.415	5.415
LBS	0.45	0.40	0.65	0.77	1.19	1.73	2.74	3.60	5.51	8.90	12.61	36.92	17.50

PIPE SIZE	CLASS 6000 - Figure No. 06030												
	1/8	1/4	3/8	1/2	3/4	1	1-1/4	1-1/2	2	2-1/2	3	3-1/2	4
A	1.375	1.625	1.813	2.25	2.563	3.063	3.438	4.063	4.875	5.688	6.875	---	---
B	1.625	1.750	2.000	2.313	2.500	2.813	3.000	3.438	4.000	4.375	8.000	---	---
C	0.865	1.025	1.235	1.465	1.795	2.165	2.425	2.965	3.615	4.305	5.415	---	---
LBS	0.48	0.56	0.75	1.35	2.01	3.17	3.92	6.60	10.12	14.00	41.16	---	---

Clase de presión de rosca	Espesor de tubo
Class 3000	S160
Class 6000	XXH

# Socket Weld Di-Electric Union



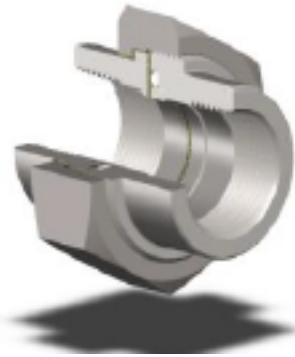
CLASS 3000 - FIGURE NO. 13039

PIPE SIZE	1/8	1/4	3/8	1/2	3/4	1	1-1/4	1-1/2	2	2-1/2	3
A	1.375	1.375	1.625	1.813	2.250	2.562	3.063	3.438	4.063	4.875	5.688
B	1.688	1.688	1.843	1.968	2.250	2.468	2.781	3.031	3.406	3.968	4.281
C	0.865	0.865	1.025	1.235	1.465	1.795	2.165	2.425	2.965	3.615	4.305
D	0.426	0.560	0.693	0.859	1.071	1.335	1.682	1.922	2.410	2.910	3.536
E	0.813	0.813	0.906	0.906	1.094	1.156	1.344	1.468	1.593	2.156	2.218
LBS	0.40	0.38	0.52	0.73	1.19	1.66	2.66	3.42	5.36	9.12	12.58

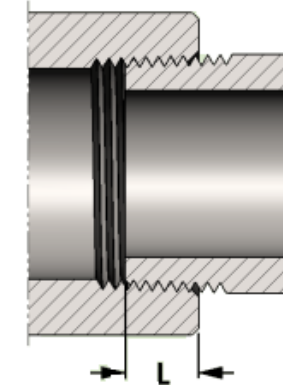
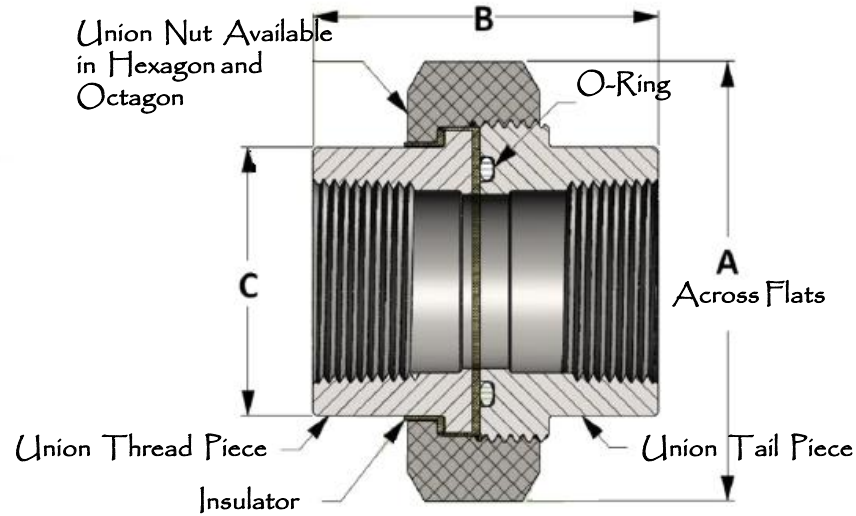
CLASS 6000 - FIGURE NO. 16039

PIPE SIZE	1/8	1/4	3/8	1/2	3/4	1	1-1/4	1-1/2	2	2-1/2	3
A	1.375	1.625	1.813	2.250	2.562	3.063	3.438	4.063	4.875	5.688	---
B	1.688	1.843	1.968	2.250	2.468	2.781	3.031	3.406	3.968	4.281	---
C	0.865	1.025	1.235	1.465	1.795	2.165	2.425	2.965	3.615	4.305	---
D	0.426	0.560	0.693	0.859	1.071	1.335	1.682	1.922	2.410	2.910	---
E	0.813	0.906	0.906	1.094	1.156	1.344	1.468	1.593	2.156	2.218	---
LBS	0.48	0.56	0.75	1.35	2.01	3.17	3.92	6.60	10.12	14.00	---

Clase de presión de Soldadura	Espesor de tubo
Class 3000	S80/XH
Class 6000	S160



# Threaded Di-Electric Union



SIZE	L	SIZE	L
1/8	0.273	2	0.697
1/4	0.395	2-1/2	0.933
3/8	0.407	3	1.016
1/2	0.534	3-1/2	1.071
3/4	0.553	4	1.094
1	0.661	5	1.187
1-1/4	0.681	6	1.208
1-1/2	0.681	8	1.313

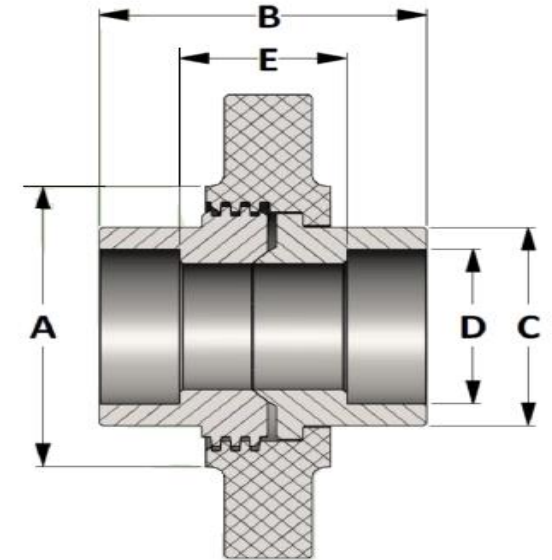
LONGITUD DE LA ROSCA ATORNILLADA AL CONECTOR

CLASS 3000 – Figure No. 03039											
PIPE SIZE	1/8	1/4	3/8	1/2	3/4	1	1-1/4	1-1/2	2	2-1/2	3
A	1.375	1.375	1.625	1.813	2.25	2.563	3.063	3.438	4.063	4.875	5.688
B	1.688	1.688	1.843	1.968	2.250	2.468	2.781	3.031	3.406	3.968	4.281
C	0.865	0.865	1.025	1.235	1.465	1.795	2.165	2.425	2.965	3.615	4.305
LBS	0.45	0.40	0.65	0.77	1.19	1.73	2.74	3.60	5.51	8.90	12.61

CLASS 6000 – Figure No. 06039											
PIPE SIZE	1/8	1/4	3/8	1/2	3/4	1	1-1/4	1-1/2	2	2-1/2	3
A	1.375	1.625	1.813	2.25	2.563	3.063	3.438	4.063	4.875	5.688	---
B	1.688	1.843	1.968	2.250	2.468	2.781	3.031	3.406	3.968	4.281	---
C	0.865	1.025	1.235	1.465	1.795	2.165	2.425	2.965	3.615	4.305	---
LBS	0.48	0.56	0.75	1.35	2.01	3.17	3.92	6.60	10.12	14.00	---

Clase de presión de rosca	Esesor de tubo
Class 3000	S160
Class 6000	XXH

# Socket Weld Lug Nut Union



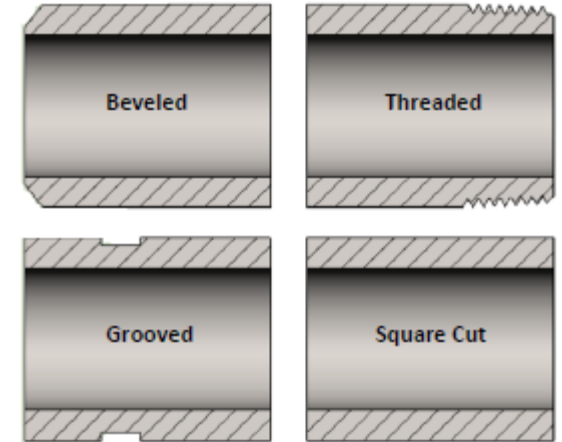
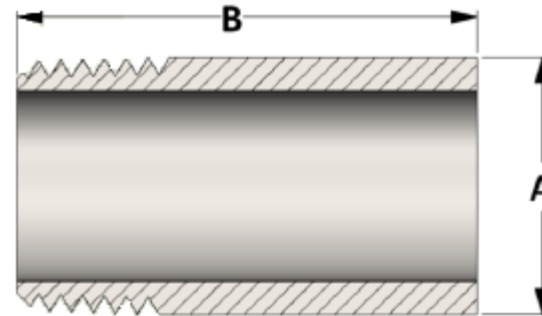
CLASS 3000 – FIGURE NO. 13267								
PIPE SIZE	1/2	3/4	1	1-1/4	1-1/2	2	2-1/2	3
A	1.813	2.250	2.562	3.063	3.438	4.063	4.875	5.688
B	2.006	2.318	2.506	2.818	3.068	3.443	4.006	4.318
C	1.235	1.465	1.795	2.165	2.425	2.965	3.615	4.305
D	0.859	1.071	1.335	1.682	1.922	2.410	2.910	3.536
E	0.906	1.094	1.156	1.344	1.468	1.593	2.156	2.218
LBS	0.96	1.61	2.17	3.33	4.36	7.22	12.57	17.12

CLASS 6000 – FIGURE NO. 16267								
PIPE SIZE	1/2	3/4	1	1-1/4	1-1/2	2	2-1/2	3
A	2.250	2.562	3.063	3.438	4.063	4.875	5.688	---
B	2.318	2.506	2.818	3.068	3.443	4.006	4.318	---
C	1.465	1.795	2.165	2.425	2.965	3.615	4.305	---
D	0.859	1.071	1.335	1.682	1.922	2.410	2.910	---
E	1.094	1.156	1.344	1.468	1.593	2.156	2.218	---
LBS	1.80	2.52	3.95	5.00	8.83	14.65	21.19	---

Clase de presión de Soldadura	Espesor de tubo
Class 3000	S80/XH
Class 6000	S160

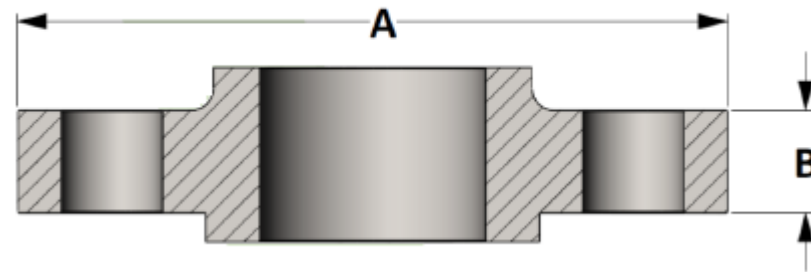
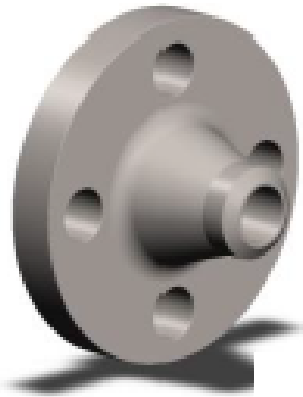


# Pipe Nipple



Pipe Size	A	B										
		Close	Short	Standard Lengths								
1/8	0.405	0.750	1.500	2.000	2.500	3.000	3.500	4.000	4.500	5.000	5.500	6.000
1/4	0.540	0.875	1.500	2.000	2.500	3.000	3.500	4.000	4.500	5.000	5.500	6.000
3/8	0.675	1.000	1.500	2.000	2.500	3.000	3.500	4.000	4.500	5.000	5.500	6.000
1/2	0.840	1.125	1.500	2.000	2.500	3.000	3.500	4.000	4.500	5.000	5.500	6.000
3/4	1.050	1.375	1.500	2.000	2.500	3.000	3.500	4.000	4.500	5.000	5.500	6.000
1	1.315	1.500	2.000	---	2.500	3.000	3.500	4.000	4.500	5.000	5.500	6.000
1-1/4	1.660	1.625	2.000	---	2.500	3.000	3.500	4.000	4.500	5.000	5.500	6.000
1-1/2	1.900	1.750	2.000	---	2.500	3.000	3.500	4.000	4.500	5.000	5.500	6.000
2	2.375	2.000	2.500	---	---	3.000	3.500	4.000	4.500	5.000	5.500	6.000
2-1/2	2.875	2.500	3.000	---	---	---	---	4.000	4.500	5.000	5.500	6.000
3	3.500	2.625	3.000	---	---	---	---	4.000	4.500	5.000	5.500	6.000
3-1/2	4.000	2.750	4.000	---	---	---	---	---	4.500	5.000	5.500	6.000
4	4.500	2.875	4.000	---	---	---	---	---	4.500	5.000	5.500	6.000
5	5.563	3.000	4.500	---	---	---	---	---	---	5.000	5.500	6.000
6	6.625	3.125	4.500	---	---	---	---	---	---	5.000	5.500	6.000

# Exotic Alloy Flange



## TYPE OF FLANGES

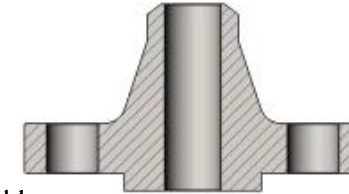
Slip-on Welding



Blind



Welding Neck



Socket Welding

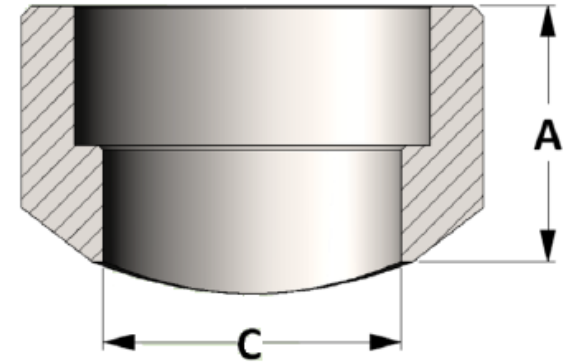


Threaded



PIPE SIZE	CL 150		CL 300		CL 600		CL 1500		CL 2500	
	A	B	A	B	A	B	A	B	A	B
1/2	3.500	0.375	3.750	0.500	3.750	0.563	4.750	0.875	5.250	1.188
3/4	3.875	0.438	4.625	0.563	4.625	0.625	5.125	1.000	5.500	1.250
1	4.250	0.500	4.875	0.625	4.875	0.688	5.875	1.125	6.250	1.375
1-1/4	4.625	0.563	5.250	0.688	5.250	0.813	6.250	1.125	7.250	1.500
1-1/2	5.000	0.625	6.125	0.750	6.125	0.875	7.000	1.125	8.000	1.750
2	6.000	0.688	6.500	0.813	6.500	1.000	8.500	1.500	9.250	2.000
2-1/2	7.000	0.813	7.750	0.938	7.500	1.125	9.625	1.625	10.500	2.250
3	7.500	0.875	8.250	1.063	8.250	1.125	10.500	1.875	12.000	2.625
3-1/2	8.500	0.875	9.000	1.125	9.000	1.375	---	---	---	---
4	9.000	0.875	10.000	1.188	10.750	1.500	12.250	2.125	14.000	3.000

# Socket Weld Outlet



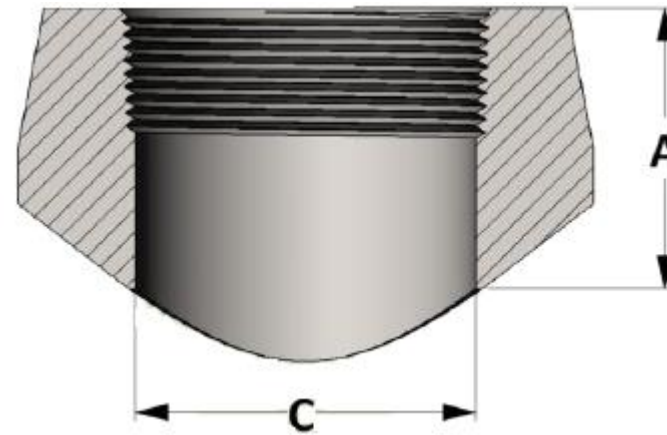
PIPE SIZE	CLASS 3000 – Figure No. 13502												
	1/8	1/4	3/8	1/2	3/4	1	1-1/4	1-1/2	2	2-1/2	3	3-1/2	4
A	0.750	0.750	0.813	1.000	1.063	1.313	1.313	1.375	1.500	1.813	2.000	2.125	2.250
C	0.269	0.364	0.493	0.622	0.824	1.049	1.380	1.610	2.067	2.469	3.068	3.548	4.026
LBS	0.07	0.12	0.16	0.27	0.36	0.59	0.84	1.00	1.53	2.66	3.72	4.40	7.05

PIPE SIZE	CLASS 6000 – Figure No. 16502												
	1/8	1/4	3/8	1/2	3/4	1	1-1/4	1-1/2	2	2-1/2	3	3-1/2	4
A	1.125	1.125	1.125	1.250	1.438	1.563	1.625	1.688	2.063	2.688	2.688	---	3.313
C	0.157	0.250	0.359	0.464	0.612	0.815	1.160	1.338	1.687	2.125	2.624	---	3.438
LBS	0.15	0.30	0.30	0.48	0.81	1.30	1.54	1.97	5.01	6.19	7.36	---	14.02

PIPE SIZE	CLASS 9000 – Figure No. 19502												
	1/8	1/4	3/8	1/2	3/4	1	1-1/4	1-1/2	2	2-1/2	3	3-1/2	4
A	---	---	---	1.250	1.469	1.625	1.750	1.768	2.000	2.438	2.750	---	3.313
C	---	---	---	0.252	0.434	0.599	0.896	1.100	1.503	1.771	2.300	---	3.152
LBS	---	---	---	0.55	0.80	1.40	1.88	2.10	3.35	6.48	11.11	---	17.69

Clase de presión de soldadura	Espesor de tubo
Class 3000	S80/XH
Class 6000	S160
Class 9000	XXH

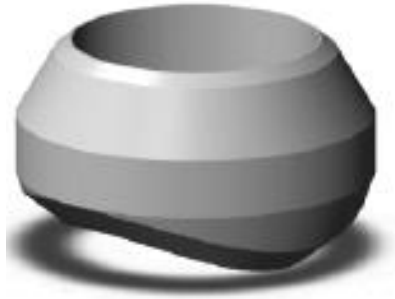
# Threaded Outlet



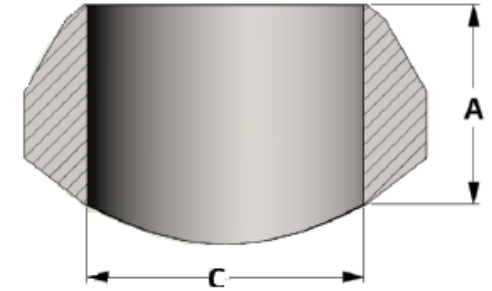
PIPE SIZE	CLASS 3000 – Figure No. 03502												
	1/8	1/4	3/8	1/2	3/4	1	1-1/4	1-1/2	2	2-1/2	3	3-1/2	4
A	0.750	0.750	0.813	1.000	1.063	1.313	1.313	1.375	1.500	1.813	2.000	2.125	2.250
C	0.328	0.438	0.563	0.703	0.906	1.141	1.468	1.688	2.188	2.563	3.188	3.688	4.188
LBS	0.07	0.12	0.16	0.21	0.36	0.59	0.84	1.00	1.72	2.90	4.24	4.40	6.91

PIPE SIZE	CLASS 6000 – Figure No. 06502												
	1/8	1/4	3/8	1/2	3/4	1	1-1/4	1-1/2	2	2-1/2	3	3-1/2	4
A	1.125	1.125	1.125	1.250	1.438	1.563	1.625	1.688	2.063	2.688	2.688	---	3.313
C	0.328	0.438	0.563	0.703	0.906	1.141	1.468	1.688	2.188	2.563	3.188	---	4.188
LBS	0.15	0.21	0.28	0.42	0.59	1.02	1.60	1.98	3.06	6.35	10.12	---	19.72

Clase de presión de rosca	Espesor de tubo
Class 3000	XH
Class 6000	SI 60

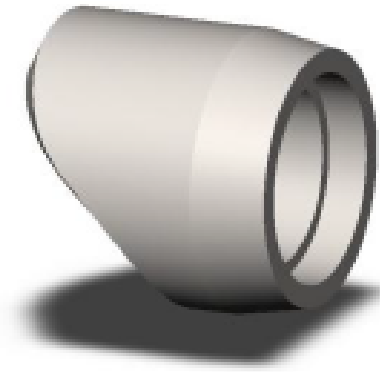


# Butt Weld Outlet



PIPE SIZE	STD – Figure No. 45502			XH – Figure No. 48502			S160 – Figure No. 52502			XXH – Figure No. 53502		
	A	C	LBS	A	C	LBS	A	C	LBS	A	C	LBS
1/8	0.625	0.269	0.08	0.625	0.215	0.10	1.000	0.157	0.12	---	---	---
1/4	0.625	0.364	0.08	0.625	0.302	0.08	1.125	0.250	0.15	---	---	---
3/8	0.750	0.493	0.15	0.750	0.423	0.15	1.125	0.359	0.20	---	---	---
1/2	0.750	0.622	0.18	0.750	0.546	0.20	1.125	0.466	0.23	1.125	0.252	0.23
3/4	0.875	0.824	0.25	0.875	0.742	0.31	1.250	0.614	0.65	1.250	0.434	0.65
1	1.063	1.049	0.50	1.063	0.957	0.55	1.500	0.815	0.78	1.500	0.599	0.78
1-1/4	1.250	1.380	0.80	1.250	1.278	0.90	1.750	1.160	1.16	1.750	0.896	1.16
1-1/2	1.313	1.610	1.00	1.313	1.500	1.10	2.000	1.338	1.60	2.000	1.100	1.60
2	1.500	2.067	1.75	1.500	1.939	1.75	2.188	1.689	1.95	2.188	1.503	1.95
2-1/2	1.625	2.469	2.50	1.625	2.323	2.28	2.438	2.125	3.02	2.438	1.771	3.02
3	1.750	3.068	3.82	1.750	2.900	3.50	2.875	2.624	5.75	2.875	23.00	5.75
3-1/2	1.875	3.548	5.10	1.875	3.364	4.75	---	---	---	---	---	---
4	2.000	4.026	6.20	2.000	3.826	5.00	3.438	3.438	9.56	3.438	3.152	9.56
5	2.250	5.047	8.00	2.250	4.813	8.50	3.688	4.313	12.65	3.688	4.063	12.65
6	2.375	6.065	11.50	3.063	5.761	15.00	4.125	5.189	25.25	4.125	4.897	25.25
8	2.750	7.981	22.00	3.875	7.625	35.00	La dimensión A corresponde al tamaño del espesor de la tubería de cabecera			La dimensión A corresponde al tamaño del espesor de la tubería de cabecera		
10	3.063	10.020	37.00	3.688	9.750	46.00						
12	3.375	12.000	44.00	4.063	11.750	63.00						
14	3.500	13.250	63.00	3.938	13.000	72.00						
16	3.688	15.250	76.00	4.188	15.000	102.00						
18	3.813	17.250	100.00	4.375	17.000	130.00						
20	4.000	19.250	112.00	4.688	19.000	163.00						
24	4.563	23.250	210.00	5.500	23.000	271.00						
26	4.688	25.250	245.00	5.750	25.000	325.00						
30	5.375	29.250	375.00	---	---	---						
36	5.375	35.250	498.00	---	---	---						
48	5.813	47.250	1125.00	---	---	---						

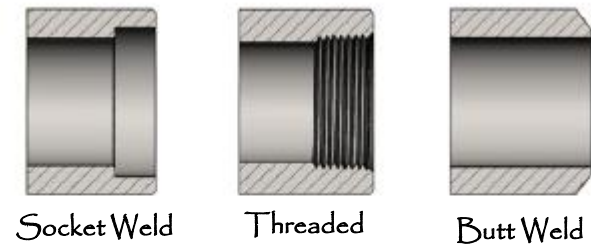
# Elbow Outlet



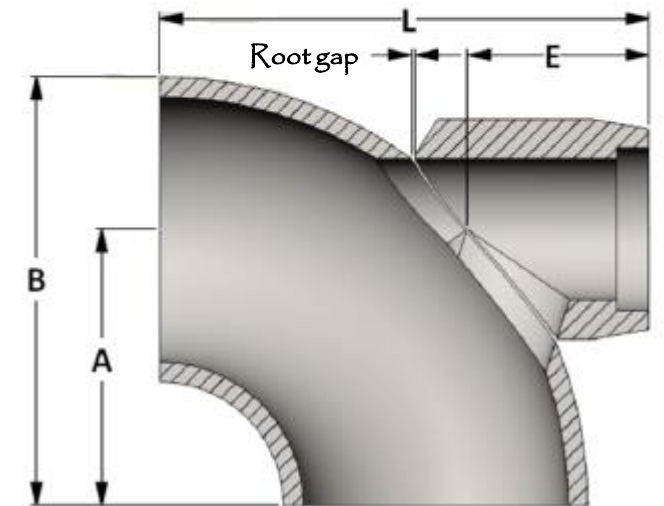
Equation for overall length  

$$L = E + \sqrt{B^2 - A^2} + \text{Root Gap}$$

## End Preparations



PIPE SIZE	STD / S40		XH / S80		Class 3000		Class 6000	
	E	LBS	E	LBS	E	LBS	E	LBS
1/4	1.625	0.21	1.625	0.25	1.593	0.23	1.813	0.54
3/8	1.625	0.29	1.625	0.31	1.625	0.37	1.813	0.82
1/2	1.625	0.40	1.625	0.45	1.625	0.45	2.125	1.00
3/4	1.875	0.75	1.875	0.90	1.875	0.70	2.438	1.40
1	2.250	1.25	2.250	1.40	2.250	1.35	2.781	2.55
1-1/4	2.500	1.84	2.500	1.99	2.500	2.00	3.000	3.40
1-1/2	2.688	2.05	2.688	2.25	2.688	2.60	3.313	5.55
2	3.125	3.60	3.125	3.95	3.125	4.85	4.063	9.38
2-1/2	3.438	4.36	3.438	4.92	3.438	5.50	5.125	17.99
3	3.906	6.50	3.906	7.46	4.375	10.60	---	---
4	4.750	13.50	4.750	13.91	5.125	16.34	---	---
6	6.375	32.52	7.063	40.60	---	---	---	---
8	7.750	53.38	9.125	88.04	---	---	---	---
10	9.188	99.00	10.500	157.41	---	---	---	---
12	10.875	167.37	12.063	261.47	---	---	---	---



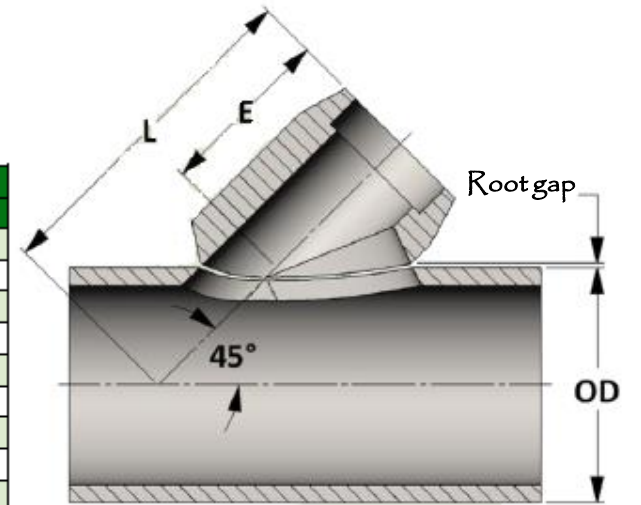
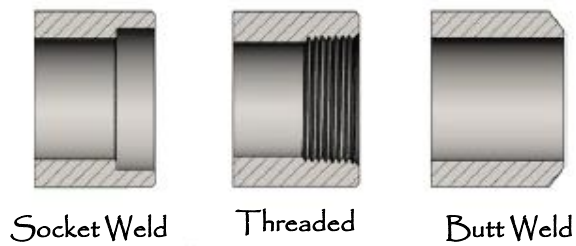


# Lateral Outlet

Equation for center to face  

$$L = E + 1,414 (OD/2 + \text{Root Gap})$$

## End Preparations



PIPE SIZE	STD / S40		XH / S80		Class 3000		Class 6000	
	E	LBS	E	LBS	E	LBS	E	LBS
1/4	1.625	0.21	1.625	0.25	1.593	0.23	1.813	0.54
3/8	1.625	0.29	1.625	0.31	1.625	0.37	1.813	0.82
1/2	1.625	0.40	1.625	0.45	1.625	0.45	2.125	1.00
3/4	1.875	0.75	1.875	0.90	1.875	0.70	2.438	1.40
1	2.250	1.25	2.250	1.40	2.250	1.35	2.781	2.55
1-1/4	2.500	1.84	2.500	1.99	2.500	2.00	3.000	3.40
1-1/2	2.688	2.05	2.688	2.25	2.688	2.60	3.313	5.55
2	3.125	3.60	3.125	3.95	3.125	4.85	4.063	9.38
2-1/2	3.438	4.36	3.438	4.92	3.438	5.50	5.125	17.99
3	3.906	6.50	3.906	7.46	4.375	10.60	---	---
4	4.750	13.50	4.750	13.91	5.125	16.34	---	---
6	6.375	32.52	7.063	40.60	---	---	---	---
8	7.750	53.38	9.125	88.04	---	---	---	---
10	9.188	99.00	10.500	157.41	---	---	---	---
12	10.875	167.37	12.063	261.47	---	---	---	---

# Run Consolidations for Outlets Cont'd

CL 6000 Threaded Aoutlet \* CL 6000 Socket Weld Outlet  
 S160 Butt Weld Outlet \* XXH Butt weld Outlet

BRANCH SIZE	RUN CONSOLIDATION							
1/8	36 - 1/8	FLAT						
1/4	36 - 1/4	FLAT						
3/8	36 - 3/8	FLAT						
1/2	1/2	36 - 3/4	FLAT					
3/4	1 - 3/4	36 - 1-1/4	FLAT					
1	1	2-1/2 - 1-1/4	36 - 3	FLAT				
1-1/4	1-1/4	4 - 1-1/2	36 - 5	FLAT				
1-1/2	1-1/2	2-1/2 - 2	5 - 3	36 - 6	FLAT			
2	2	3-1/2 - 2-1/2	6 - 4	36 - 8	FLAT			
2-1/2	3 - 2-1/2	5 - 3-1/2	18 - 6	36 - 20	FLAT			
3	3-1/2 - 3	5 - 4	10 - 6	26 - 12	36 - 28	FLAT		
4	4	5	8 - 6	14 - 10	36 - 16	46 - 38	FLAT	
5	5	6	10 - 8	18 - 12	36 - 20	72 - 38	FLAT	
6	6	8	10	14 - 12	20 - 16	36 - 22	102 - 38	FLAT

CL3000 & 6000 Threaded Elbow Outlet  
 CL3000 & 6000 Socket Weld Elbow Outlet  
 STD, XH, S160 & XXH Butt weld Elbow Outlet

BRANCH SIZE	RUN
1/4	36 - 1-1/4
3/8	36 - 1-1/4
1/2	36 - 1-1/4
3/4	36 - 1-1/4
1	36 - 2
1-1/4	36 - 2
1-1/2	36 - 2
2	36 - 3

CL 3000 Threaded Lateral Outlet  
 CL 3000 Socket Weld Lateral outlet  
 STD & XH Butt weld Lateral Outlet

BRANCH SIZE	RUN CONSOLIDATION		
1/4	2-1/2 - 1-1/4	12 - 3	
3/8	2-1/2 - 1-1/4	12 - 3	
1/2	2-1/2 - 1-1/4	12 - 3	
3/4	1-1/2 - 1-1/4	5 - 2	12 - 6
1	2-1/2 - 2	5 - 3	12 - 6
1-1/4	2-1/2 - 2	5 - 3	12 - 6
1-1/2	2-1/2 - 2	5 - 3	12 - 6
2	5 - 4	8 - 6	12 - 10

CL 6000 Threaded Lateral Outlet  
 CL 6000 Socket Weld Lateral Outlet  
 S160 & XXH Butt weld Lateral Outlet

BRANCH SIZE	RUN CONSOLIDATION		
1/4	2-1/2 - 1-1/4	12 - 3	
3/8	2-1/2 - 1-1/4	12 - 3	
1/2	1-1/2 - 1-1/4	5 - 2	12 - 6
3/4	2-1/2 - 2	5 - 3	12 - 6
1	2-1/2 - 2	5 - 3	12 - 6
1-1/4	2-1/2 - 2	5 - 3	12 - 6
1-1/2	5 - 4	8 - 6	12 - 10